



ALAHÉ ALDO
ARCHITECTS MOSHER
DREW



MELINA ALUWI
HED



TINA ANGELES, AIA
Miller Hull



STEPHANIE ANTL
SGPA Architecture and
Planning



VIVECA BISSONNETTE
Hollander Design Group



PAMELA CAMACK
SGPA Architecture and
Planning



JANENE CHRISTOPHER
Steinberg Hart



DANIELA DEUTSCH
NewSchool of
Architecture & Design



DEBORAH ELLIOTT
ID Studios, Inc.



TIFFANY ENGLISH
Ware Malcomb



HEATHER FOLEY
HED



SANDRA GRAMLEY,
Platt/Whitelaw Architects,
Inc.

SAN DIEGO BUSINESS JOURNAL

Women of Influence in Architecture 2021



KATHLEEN HALLAHAN
Kathleen Hallahan,
Architect



CATHARINE HUGHES
Ware Malcomb



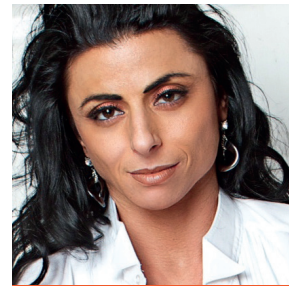
MARLENE IMIRZIAN
Marlene Imirzian &
Associates Architects



**LAURA JEANNE
ANDREWS, CID**
LPA Design Studios



AIMEE KELLY-KIRKLAND
McFarlane Architects, Inc



CECILIA KRUMP
McFarlane Architects



JENNETTE LA QUIRE
HED



JUDY LEE SHERN
OJB Landscape
Architecture



JOHANNA MALL
McCullough Landscape
Architecture, Inc.



JENNIFER MONTGOMERY
Schmidt Design Group



TRACY MORRAN
HED



AMY MORWAY
ID Studios, Inc.



WENDY ROGERS, FAIA
LPA Design Studios



JILL RUSSELL-LAYMAN
ID Studios, Inc.



HEATHER RUSZCZYK
Miller Hull



ANGELA RYAN
Ware Malcomb



KELLIE TERRELL
domusstudio architecture



PATRICIA TRAUTH
Rick Engineering

SAN DIEGO BUSINESS JOURNAL WOMEN OF INFLUENCE IN ARCHITECTURE 2021



ALAHÉ ALDO, AIA, LEED AP
Associate Principal
Architects Mosher Drew

With a diverse background and over 30 years of experience in architecture, Alahé Aldo possess a wide-ranging national and international portfolio of award-winning work including educational, commercial, and mixed-use projects. Over the last decade, she has focused on creating exceptional academic spaces, exemplifying the cutting edge of 21st-century trends in campus life and education delivery. Most notable have been live-learn residence halls as well as flexible teaching spaces supporting emerging technology and pedagogical innovation for several institutions, including Harvard University, MIT, Colby College, and Northeastern University.

Her projects and involvement in education reflect a dedication to improving campus life and enriching the quality of educational environments for students. As a Senior Director and Associate Principal at Architects Mosher Drew, she has led several education projects for UCSD, San Diego Unified School District and San Bernardino City Unified School District.



MELINA ALUWI
Associate Principal
HED

Melina Aluwi is a higher education sector leader and Associate Principal in the San Diego office of the national architecture and engineering firm, HED. Recently, she was named NewSchool of Architecture & Design's 2020 Alumni of the Year, recognizing her career accomplishments and mentorship of emerging leaders. Aluwi has deep expertise in both public and private sector educational, civic, cultural, and commercial project types. She has worked in various roles within the architecture and design field, from business development and operations to design and construction, bringing a holistic design and management approach to every project. She has achieved the credentials of AIA, LEED AP BD+C, and NCARB.

Committed to diversity and equity within the profession, she is also a founding member of the San Diego Chapter of the National Organization of Minority Architects (SDNOMA), and works to cultivate awareness, membership, engagement, and support programs.



TINA ANGELES, AIA
Project Manager
Miller Hull

A native of the Philippines, Tina Angeles gained her Bachelor of Science in Architecture from the University of the Philippines in 2004 and immigrated to the United States to begin her architectural career. She has been practicing as an architect for the last 16 years and has worked on a variety of projects from higher education, public service buildings and housing.

She is a member of Miller Hull's Eco-ops, a group that researches sustainable practices for the environment, and a founding member of Equity Lab where she works on initiatives for the firm's leadership to consider as Miller Hull continually works toward national leadership of diversity, equity, and inclusion within the industry.

This year, Angeles was appointed by her local government to serve on the entity's Mobility Commission, which serves as an advisory body to the city council. Her experience on climate issues and the built environment will support the commission's goal in meeting the city's climate action plan.



STEPHANIE ANTL
Education Studio Leader
SGPA Architecture and Planning

Stephanie Antl joined SGPA Architecture and Planning in 2011. As SGPA's Education Studio Leader and Associate Principal, she focuses on creating healthy, supportive learning environments for students and staff in a wide variety of building types. She calls upon lessons learned from experience in Retail, Residential, and Mixed-Use to inform her projects.

Her dedication and perseverance have been instrumental in the recent successes within her studio, growing the volume by 600% over the past few years. She leads new construction and renovation projects for SDSU, USD, UCSD, MiraCosta Community College and San Diego Unified School District, ranging from \$2 million to \$65 million.

As a Registered Architect and an active participant in organizations including Coalition for Adequate School Housing and the Design Build Institute of America (DBIA), Antl stays ahead of current trends in design and delivery methods. She is also responsible for providing strategic ideas that influence firmwide operations and business development.

Contact: santl@sgpa.com (610) 297-0131

ARCHITECTS
**MOSHER
DREW**

HED

MILLER HULL

SGPA ARCHITECTURE
AND PLANNING



VIVECA BISSONNETTE
Founder/Design Principal
Hollander Design Group

With more than 30 years of professional experience in the fields of both cultural anthropology and interior design, Viveca Bissonnette brings a broad breadth of knowledge to her professional pursuits. As co-founder and design principal at Hollander Design Group (HDG) headquartered in San Diego, she leads the firm's workplace strategy practice employing ethnography to inform design.

Bissonnette is currently a member of the New School of Architecture's interior design program advisory council and a Trustee of the Museum of Contemporary Art San Diego (MCASD). Most notably she has been deeply involved with the International Interior Design Association (IIDA), beginning with her involvement as a student. Most recently Bissonnette was honored with IIDA's 2019 Circle of Excellence Award given to an individual who exemplifies outstanding dedication to the interior design profession, recognizing their leadership and mentoring qualities and an unwavering commitment to paving the way for the future.



PAMELA CAMACK
Senior Living & Wellness Studio Leader,
Director of Operations - San Diego
SGPA Architecture and Planning

Pamela Camack is the Senior Living/Wellness Studios Leader at SGPA Architecture and Planning. As a Registered Architect and LEED Accredited Professional, Camack believes in incorporating sustainable concepts into her projects. Additionally, she is an active board member of Leading Age, a national association for not-for-profit senior communities. Camack has served as the Lead Architect on the expansion of Seacrest Village's senior living campus located in Encinitas since around 2004. During that time, Camack has been instrumental in the design and development of the facility's Katzin Residence, a memory care facility which opened in 2007, the Vitality Center and an additional state-of-the-art Independent Living Residence. In 2019, she led a major renovation of the facility's 30-year-old CORE services which included the main kitchen and dining room, lobby outside the dining room, laundry facilities and healthcare center, the dining room, kitchen and pantry.

Contact: pcamack@sgpa.com (619) 297-0131



JANENE CHRISTOPHER
Partner
Steinberg Hart

With over thirty years of experience, Janene Christopher has been instrumental in the growth of Steinberg Hart's civic practice in San Diego. Christopher became a licensed architect shortly after receiving her Master of Architecture degree from Cal Poly San Luis Obispo, where she won the Henry Adams Medal as the outstanding student of her class and then quickly became a partner in the firm.

Today, informed by leadership positions on design-build projects with an aggregate construction value of over \$1 billion, she serves on the Steinberg Hart leadership team as head of the Practice Group, where she is responsible for quality assurance procedures governing every project in the office. Christopher also currently serves as Principal in Charge on the \$785 million South Airfield project at NAWA China Lake, the number one worldwide priority of the U.S. Department of Defense.

She previously served as president of AIA San Diego's Women in Architecture and as director of California Women in Environmental Design.



DANIELA DEUTSCH
Head of Architecture Programs
NewSchool of Architecture & Design

Daniela Deutsch co-founded the award-winning Exitecture Architekten, an Architecture firm in Frankfurt, Germany. She is also Principal of Exitecture ArchLab Inc. in San Diego and has also worked as a Project Designer with Schneider and Schumacher in Frankfurt, Germany, and with Westfield Design, Carrier Johnson + Culture, and Ballinger AE in the U.S.

Deutsch has served as a NewSchool Professor since 2010 and this past March, she was named the Head of Architecture Programs at NewSchool. She is also NewSchool's 4th-year level coordinator, where she has led the Integrated Design Studio for the past eight years and coordinated the Environmental Systems Sequence in the Undergraduate Architecture Program.

She is a member of San Diego Green Building Council's board of directors, and she serves as a peer reviewer for the Association of Collegiate Schools of Architecture (ACSA). Deutsch is a graduate of the Technical University of Darmstadt, Germany, where she received both a Bachelor and a Master of Architecture Degree.



SGPA ARCHITECTURE
AND PLANNING

**steinberg
hart**

NEWSCHOOL
OF ARCHITECTURE & DESIGN

SAN DIEGO BUSINESS JOURNAL

WOMEN OF INFLUENCE IN ARCHITECTURE 2021



DEBORAH ELLIOTT
Principal
ID Studios, Inc.

Deborah Elliott grew up in Montana surrounded by a music "rich" family which helped nurture a love of art and design. She moved thousands of miles away from home to attend Arizona State University where she successfully received her B.S. in Interior Architecture. She is a Certified Interior Designer (CID) in the state of California, LEED AP, and National Council for Interior Design Qualification (NCIDQ). Elliott also participates in, and has membership in professional and community organizations, including Biocom, IIDA, USGBC, ULI and NAIOP.

She has spent more than 30 years in the San Diego community building her Interior Architecture career, and the last 16 of that building ID Studios as one of the Founding Principals. Her depth of leadership and understanding of design has been shared as an instructor at UCSD Extension, a judge for NCIDQ, Solutia, Starnet and ASID and as a guest speaker for Neocon, SDSU, Design Institute, IIDA and Women in Govt.



TIFFANY ENGLISH
Principal
Ware Malcomb

Joining Ware Malcomb in 2001, Tiffany English has overseen, designed and managed over 5 million square feet of projects, ranging from tenant improvements to full-service build to suit projects, as well as national account management. She serves on the Ware Malcomb Interior Advisory Group (IAG), where she provides strategic insight for companywide initiatives. English is responsible for the growth and overall management of two San Diego offices and Latin America.

A passion for innovative design and committed participation are just a few characteristics that define her work ethic and make her a prominent figure in the industry. She is currently serving as President on the 2021 CREW Network Board of Directors. English has helped expand Ware Malcomb's market share, relocated twice for the firm, and opened a second office location in San Diego, yet her influence goes beyond these notable accomplishments. Additionally, she is an active participant in Ware Malcomb's mentoring program.

Contact: tenglish@waremalcomb.com
(858) 500-4623



HEATHER FOLEY
Associate
HED

Heather Foley is the Landscape Architecture discipline leader and Associate in HED's San Diego office, a national architecture and engineering firm. She leads HED's landscape architecture practice throughout California and her diverse portfolio of work weaves together the natural and built environment to create spaces where people can connect with nature and create community. This work includes campus master plans, workplace, mixed-use development, housing, and healthcare. She also contributes to the firm's business development efforts and is working to grow HED's residential portfolio throughout Southern California.

She has prior experience working in sensitive coastal environments, on brownfield redevelopment projects, and in executing streetscape design. Prior to joining HED, Foley spent 10 years as the executive director of the Urban Land Institute. She established herself as an expert on a spectrum of land use policies, housing, mobility, capital markets, and design through the development of educational programs and advisory services.



CONGRATULATIONS!
JANENE CHRISTOPHER AIA
PARTNER, STEINBERG HART



For being recognized as one of San Diego's most Influential Women in Architecture in 2021. As a Steinberg Hart Partner with over 30 years of practice, founding member of SDNOMA and former president of AIA San Diego's Women in Architecture, we are extremely proud of how you represent our organization. Thank you for your continued dedication and exemplary accomplishments, leadership, and mentorship.



San Diego County Operations Center, Campus Commons

STEINBERG HART is an international architecture, interiors, and planning firm headquartered in Los Angeles. The firm has built a diverse and talented team that works collaboratively across all seven offices challenging one another to develop designs that build community, enhance business, support learning, and connect people with place. Steinberg Hart is known for innovation in design thinking and building technologies that help clients realize the full potential of their project.



SAN DIEGO BUSINESS JOURNAL WOMEN OF INFLUENCE IN ARCHITECTURE 2021



SANDRA GRAMLEY, AIA, NCARB, LEED AP BD+C

President
Platt/Whitelaw Architects, Inc.

Sandra Gramley serves as Principal of one of San Diego's oldest architectural firms, with a history dating back to 1955. She continues the firm's legacy of designing for public and community projects while overlaying her specialty in historic and accessible architecture. She safeguards Platt/Whitelaw Architects' reputation for diverse hiring practices — not just tolerating different cultures but celebrating them.

Much of her work involves public outreach, and Gramley is skilled at guiding productive feedback and brainstorming sessions that lead to better libraries, community centers, schools and more. She also spent 15 years of her career teaching design students and supports others on her staff who pursue part-time teaching opportunities.

Last year she served as the president of the American Institute of Architects San Diego Chapter and previously served on the chapter's Committee on the Environment and helped plan the Center for Design. She also just completed a two-year term on the AIA California's Board of Directors.



PLATT/WHITELAW
ARCHITECTS, INC.



KATHLEEN HALLAHAN

Principal
Kathleen Hallahan, Architect

Kathleen Hallahan is the Principal of Kathleen Hallahan, Architect. After receiving her Masters of Architecture at the University of California at Los Angeles in 1985, she has worked as a laborer on several construction sites, a lighting designer, taught architectural design, and acted as the project architect, construction manager, and development partner for a mixed-use project in Downtown, which received a CCAIA award. The firm of Kathleen Hallahan, Architect has designed both residential and mixed-use projects in California, Illinois and Oregon.

At present, she is designing and developing a small office building in San Diego, as well as designing another project in Oregon. She is active in the Downtown San Diego: she was a founding member of the Little Italy Residents Association, currently President of the East Village Residents Group, and participates on other boards in downtown area.



CATHARINE HUGHES

Director, Interior Architecture & Design
Ware Malcomb

Catharine Hughes is Director, Interior Architecture & Design at Ware Malcomb. Her experience began in 1984 and encompasses all facets of interior architecture and design including visioning, programming, space planning, design, project management, account management, as well as business development and staff management. She received her Bachelor of Fine Arts degree in Interior Design from California State University Long Beach.

Currently, Hughes is responsible for the growth and overall management of Ware Malcomb's Downtown San Diego office and all interior design projects in the market. With more than 30 years of experience in the San Diego market, she has been instrumental in helping Ware Malcomb gain new market share, diversify its areas of expertise, and secure numerous new high-profile client accounts. She is active in a number of industry organizations including Building Owners and Managers Association (BOMA), and Commercial Real Estate Women Network (CREW) and International Facility Management Association (IFMA).

Contact: chughes@waremalcomb.com
(858) 500-4610

WARE MALCOMB



MARLENE IMIRZIAN

Principal
Marlene Imirzian & Associates Architects

Marlene Imirzian, FAIA is the founding principal of Marlene Imirzian & Associates Architects. The firm is known for its design excellence, project performance, and as a leader in integration of sustainable design practices for building. In 2016, the firm was selected as number 18 of the Top 50 Architecture Firms in the U.S. by Architect Magazine and has been repeatedly ranked in the Top 50 Architecture Firms in the U.S. for sustainable design. Her projects have been completed throughout San Diego County ranging from medical office renovations to major college instructional buildings for Palomar College, San Diego Community College, and Southwestern Community College.

She recently completed the Southwestern College Math & Science building in Chula Vista, one of the largest construction projects for the South Bay area. It is on track for a LEED platinum rating. Imirzian serves as a guest lecturer, a visiting critic at architectural schools, and is active in community improvement.

Contact: mimirzian@imirzian-architects.com
(760) 208-8827



LAURA JEANNE ANDREWS, CID

Managing Director, Interiors
LPA Design Studios

As Managing Director, Laura Jeanne Andrews leads the San Diego office's interior design practice, with a primary focus on workplace and tenant improvement projects. Her vast experience includes projects for companies such as Ford Mexico, Warner Bros. Games, High Moon Studios, ID Analytics and Century 21 Award. At 701 B Street, her revitalization of the San Diego office tower was recognized as San Diego Business Journal's Office Project of the Year and received awards from the American Society of Landscape Architects and the Illuminating Energy Society.

She is passionate about the social aspects of design and learning how companies work and interact with spaces. She serves as an advocate for several teams at LPA and is a member of the Programs and Education Committee for CREW San Diego. Originally from the East Coast, she holds a degree from the University of Connecticut with a course of studies at the Design Institute of San Diego.

Contact: landrews@lpadesignstudios.com
(619) 929-3958



AIMEE KELLY-KIRKLAND

Associate
McFarlane Architects, Inc

Aimee Kelly has spent her entire architectural career with McFarlane Architects, an architectural, planning, and interior design firm specializing in the life science industry. With 16 years of experience designing laboratory spaces, she now leads the firm with her manufacturing expertise, including but not limited to reagent manufacturing, device manufacturing, printed circuit board manufacturing and pharmaceutical API manufacturing. Specializing in intricate solvent delivery systems, GMP clean room facilities, dry room facilities and automated assembly lines, she maintains a dedicated coordination effort with SMEP design teams as well as owner vendors for specialized equipment.

With her knowledge of the industry, she is able to work with her clients to achieve the most functional, creative, and aesthetically pleasing space possible. Notably, she is currently working on several COVID related projects including COVID PCR test kit manufacturing facilities as well as reagent manufacturing facilities for components of the COVID vaccine.



CECILIA KRUMP

Vice President
McFarlane Architects

Cecilia Krump has been working in the Life Science Facility sector for more than 20 years. She is a licensed architect and Vice President at McFarlane Architects. Krump has been with McFarlane since its establishment in 2003 and is directly responsible for its growth from a two-person firm to a 28-person firm. Her design credentials include shell building reskins, tenant improvements and master planning. These facilities have been constructed for a multitude of construction types and have contained single and mixed occupancies. Krump always manages multiple projects in varying stages of design and/or construction with project sizes varying from 5,000 to 150,000 square feet.

Ninety percent of her projects are repeat clients which demonstrates that her hard work and attention to detail pays off. She has a Bachelor of Architecture degree from Illinois Institute of Technology and an MBA from Cameron University.



JENNETTE LA QUIRE

Principal, Board of Directors
HED

Jennette La Quire oversees educational facility projects in HED's San Diego office and has made a lifetime commitment to creating a positive impact for school districts, students and faculty. She also helps to shape the larger PreK-12 sector by sharing best practices with her intimate understanding of state regulatory agency requirements. She is a strategic planning partner to her clients and listens to their goals for their schools and districts, and then uses design to chart a pathway to the realization of those goals.

Not only is she a practitioner but she is an educator as an Adjunct Professor at San Diego State University. Regardless of budget, timeline, or other constraints, she finds a way to use design to elevate the work and make it something special that shapes future generations. La Quire earned her Master of Architecture degree from UCLA and her Bachelor of Arts degree from UC Berkeley.



SAN DIEGO BUSINESS JOURNAL

WOMEN OF INFLUENCE IN ARCHITECTURE 2021



JUDY LEE SHERN
Project Director
OJB Landscape Architecture

Judy Lee Shern, ASLA has been a rising star since joining OJB Landscape Architecture in 2012. Earning her landscape architecture degree in 2008 from California State Polytechnic University at Pomona, her early promise was fostered through a Chapman Forestry Foundation scholarship. While at Cal Poly Pomona, she was honored with an ASLA Award of Excellence for her work in the publication Subsurface.

Her interest in remaking the mixed-use typology into a more dynamic public realm has been a common thread throughout her work at OJB, including the design of Playa Vista into a series of distinct workplaces linked by gardens, courtyard, terraces and parks. Her most prominent project has been Westfield's Century City Flagship Mall in Los Angeles.

As Project Director, she is currently leading the renovations at 1800 & 1900 Avenue of the Stars; a confidential office campus project for a large tech company in Los Angeles; and the renovation of Hollywood and Highland.

Contact: jlee@ojb.com (310) 948-9423



JOHANNA MALL
Associate Landscape Designer
McCullough Landscape Architecture, Inc.

Johanna Mall started working with McCullough Landscape Architecture, Inc. straight out of college in 2018. Mall graduated Cum Laude from Cal Poly San Luis Obispo where she served as an officer for the student chapter of the American Society of Landscape Architects. She was recently promoted to Associate from Junior Associate due to her tenacity and positive attitude towards her work, clients, and co-workers, as well as her ability to multi-task and manage projects.

Outside of her work at McCullough, Mall is a Board Member of the San Diego Commons, a member of the San Diego Architecture Foundation (SDAF) and a participant of the Regional Advisory Council Design Committee. Only two years into her career, she is working on master plans for cities, envisioning the future of micro-mobility and placemaking and how those two elements intersect in communities, all while studying and taking sections of the Landscape Architecture Registration Exam (LARE) to become licensed.



JENNIFER MONTGOMERY
Associate
Schmidt Design Group

Jennifer Montgomery, PLA, SITES AP, is a landscape architect in one of San Diego's leading landscape architecture firms, Schmidt Design Group, where she leads its sustainable design initiatives. She has over 15 years of experience and focuses on public parks and open spaces. Montgomery has managed some of the firm's most complex and impactful projects including Civita Park - Phases II and III, PHR Community Park, and Bonita Cove Playground. These award-winning projects have helped shape key public spaces in the San Diego region.

As a LEED AP and SITES professional, she is an expert in sustainable design and has a keen awareness of site dynamics and its relationship to the project. She is currently heading the site design for the cutting-edge Fox Point Farms Agrihood, a project that will bring together urban coastal living with a five-acre working farm, community gardens, rainwater cisterns, an edible paseo, and a farm to table restaurant.



SCHMIDT
DESIGN
GROUP



Congratulations to Platt/Whitelaw Architects
as a *Top Architecture Firm* and
Sandra Gramley
as San Diego Business Journal's Finalist for
2021 Women of Influence in Architecture



Congratulates

On being
Named one of
San Diego's
Top Women
of Influence in
Architecture &
Landscape Architecture



Patricia Trauth
PLA, AICP, LEED AP

PATRICIA IS AN EXEMPLARY ASSET TO THE RICK TEAM. She exudes the spirit of RICK through her extensive industry experience, leadership, creativity, and teamwork and ensures exceptional client support. She has been a member of the RICK team since 2016, and longtime industry leader in our region. Patricia is an Associate Principal in the company's Landscape Architectural Division.

SAN DIEGO BUSINESS JOURNAL WOMEN OF INFLUENCE IN ARCHITECTURE 2021



TRACY MORRAN

Associate and Interior Design Leader
HED

Tracy Morran is an associate and interior design leader at the national architecture and engineering practice HED. She has more than 20 years of experience working with clients in the corporate, education, healthcare, and hospitality sectors, and holds CID, NCIDQ and LEED credentials. Previously, Morran was an interior design leader and senior project manager at Pacific Cornerstone Architects (PCA), which was acquired by HED earlier this year.

Outside of HED, she has been a member of CREW San Diego for the past seven years and lends her expertise to her role as director of the organization's Education & Programs Committee, offering educational and networking resources to hundreds of members. Over the last year, her team has been on the front lines of evolving information regarding CRE design and the heightened importance of health and wellness being supported by integrated design strategies, practices, and protocols.

Contact: tmorran@hed.deisgn (858) 864-5058



AMY MORWAY

Principal
ID Studios, Inc.

After spending more than 20 years managing and leading the design and construction on a multitude of commercial interior architecture projects in San Diego, Amy Morway co-founded ID Studios in 2005 alongside her business partner, Deborah Elliott. Their mission was to provide an elevated level of architectural and interior design services for commercial organizations in Southern California and beyond. This undertaking began with the core belief that work-life balance fortifies the creative process and fosters a dedication to superior customer care.

She holds an Interior Design degree from the University of Arizona, is a Certified Interior Designer (CID) in the state of California, and maintains LEED Accredited Professional credentials with the US Green Building Council. She is a legacy member of CREW and participates in and has membership in professional and community organizations including NAIOP, Biocom, USGBC, and IIDA.



WENDY ROGERS, FAIA

CEO & Chief Talent Officer
LPA Design Studios

Wendy Rogers is the CEO and Chief Talent Officer of LPA Design Studios, an integrated design firm that specializes in creating innovative environments that work better, do more with less and improve people's lives. She started with LPA as an intern in 1987 and has dedicated her career to being a vocal advocate for sustainable design and the importance of using research to support design strategies.

As CEO, Rogers focuses on increasing the role of LPA's proprietary research unit, LPAded, and using LPA's unique informed design approach to differentiate the firm in the marketplace. As Chief Talent Officer, she is responsible for developing the firm's culture and lifestyle to retain and attract people who want to grow and make a difference in the built environment.

A graduate of California Polytechnic State University in Pomona, she is a LEED Accredited Professional and a Fellow of the American Institute of Architects (AIA).

Contact: wrogers@lpadesignstudios.com
(949) 701-4151



JILL RUSSELL-LAYMAN

Associate Principal
ID Studios, Inc.

In January 2020, Jill Russell-Layman joined the ownership team at ID Studios and became an Associate Principal. Embracing the spirit of adventure, Russell-Layman relocated from Seattle to sunny San Diego to take advantage of the many outdoor activities afforded to the fantastic climate found here. She graduated from the Design Institute of San Diego with a BFA in Interior Design and joined ID Studios just one year after its inception in 2006. She is a Certified Interior Designer (CID) in the state of California and with the National Council for Interior Design Qualification (NCIDQ).

She has been actively involved in the architecture and interior design community since the beginning of her design career. She developed ID Studio's internship program and mentored dozens of interns, even helping many find their first job at a design firm. She's participated in numerous charity events over the years such as the IIDA Fashion Show, WeCARE and Tables for Tots.

HED



HEATHER RUSZCZYK

Project Manager
Miller Hull

Heather Ruszczyk has practiced as a registered architect for the past 5 years and has a decade of experience in the field. While at Miller Hull, she has led successful projects at multiple scales from the 11,000 square foot Center for Coastal Studies at the UCSD, Scripps Institute of Oceanography to a 240,000 square foot life science project for a confidential client.

Other projects within her portfolio include the City of San Diego's Torrey Pines Fire Station, UCSD Teaching and Learning Commons at Geisel Library and Africa Rocks! at the San Diego Zoo. She also supports Miller Hull's sustainable design practice and is a member of the firm's Mass Timber Lab and Embodied Carbon Lab.

After graduating from Principia College with a degree in mathematics, she worked for an NGO in Nepal. She earned her Master in Architecture at the University of Washington and was awarded the Thesis Prize by the architecture faculty in 2013.



ANGELA RYAN

Director, Interior Architecture & Design
Ware Malcomb

Angela Ryan brings over 15 years of architecture and interior design experience. She earned a Bachelor of Arts degree in Environmental Design from the University of Missouri in Columbia. In 2016, Ryan joined Ware Malcomb's San Diego office as a Senior Project Manager. Within a year, she was promoted to Studio Manager, Interior Architecture & Design then to Director, Interior Architecture & Design in 2019. She holds certifications from the California Council for Interior Design - Commercial Designation (CID-C), the Evidence-Based Design Accreditation and Certification (EDAC), and the National Council for Interior Design Qualification (NCIDQ).

Since joining the firm in 2016, she has led over 500 projects for Ware Malcomb's San Diego office. She manages the firm's third largest Interior Architecture & Design Studio out of the company's 23-office North American platform. Her experience includes a variety of project types including office, healthcare, education and hospitality projects, among others.

Contact: aryan@waremalcomb.com
(619) 564-5135



KELLIE TERRELL

Architect/Project Manager
domusstudio architecture

Kellie Terrell has specialized in educational and public projects for much of her architectural career since graduating from Ball State University and relocating to San Diego. As a registered Architect and LEED AP Certified professional, Terrell continues to focus on the sustainable design aspects of her projects.

Those prominent projects are as diversified as the private campus of Mater Dei High School, the public renovation of the Naval Training Center Barrack Buildings at Liberty Station, the Japanese Friendship Garden and Buildings in Balboa Park, and even a destination Winery & Resort in Northern California's Wine Country. Most recently, at domusstudio architecture, with the passage of Measure YY, a \$3.5 billion bond measure, Terrell's current project at La Jolla Elementary School has an expanded scope to include new Administration and Classroom buildings, flexible collaboration areas, and indoor/outdoor learning quads, all within a full campus modernization.



PATRICIA TRAUTH

Associate Principal
Rick Engineering

Patricia Trauth is an Associate Principal for RICK Engineering and manages landscape architectural services and staff throughout the western region. As a licensed landscape architect in California, Colorado and Arizona, a certified planner and a LEED accredited professional, she has planned and designed numerous public and private projects throughout San Diego, the Los Angeles basin and the Denver area.

Trauth was elected Trustee for the San Diego Chapter of the American Society of Landscape Architects in 2018 and represents the profession on the national level. Additionally, she was inducted into Lambda Alpha International, the Land Economics Society in early 2019. She has also worked as a college professor of landscape architecture. Trauth graduated from Bowling Green State University with a Bachelor of Fine Arts in Environmental Design and a Bachelor of Science in Education in 1979. She has a Master of Landscape Architecture degree from the University of Arizona which she acquired in 1987.



WARE MALCOMB

