

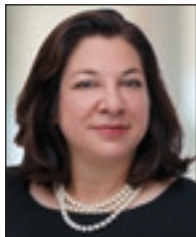
PEOPLE ON THE MOVE

HIRINGS, PROMOTIONS, BOARD MEMBERS AND SPECIAL ANNOUNCEMENTS IN SAN DIEGO

J.P.Morgan Private Bank

FINANCIAL SERVICES

New Hire



Patricia Bennett

Patricia Bennett has joined **J.P. Morgan Private Bank** in San Diego as an Executive Director and Banker. In this role, Patricia partners closely with affluent individuals, families and successful business owners to help manage, grow, preserve and ultimately transfer their wealth to their intended beneficiaries. With a career that spans over two decades, Patricia spent 12 years in New York focused on fixed income sales and trading at Goldman Sachs, Deutsche Bank and Citi Global Markets. She transitioned to wealth management in 2013 to facilitate a return to her home state of California. Patricia joins J.P. Morgan from Wells Fargo.

858.435.1805
patricia.c.bennett@jpmorgan.com
www.jpmorgan.com/sandiego

J.P.Morgan Private Bank

FINANCIAL SERVICES

New Hire



Carrie Vilaplana

Carrie Vilaplana has joined **J.P. Morgan Private Bank** in San Diego as a Vice President and Banker. Carrie works closely with successful clients across the region, including corporate executives, pre- and post-transaction business owners, real estate investors and nonprofits. With a 20-year career in finance, Carrie draws on her strong commercial lending and institutional capital markets background to help families achieve their goals and leave legacies for the next generation. Carrie began her career at Lehman Brothers and for the last 15 years, she advised high-net-worth clients in roles at Wells Fargo Private Bank and Union Bank Private Bank.

858.812.6153
carrie.vilaplana@jpmorgan.com
www.jpmorgan.com/sandiego

REAL ESTATE DEVELOPMENT

New Hire



Colin Kreik

Dealy Development, Inc. (DDI) has welcomed three new team members as it manages the development and construction of the Research and Development District (RaDD), an upcoming life science campus by IQHQ at the former Navy Broadway Complex on the downtown San Diego waterfront.

Colin Kreik, Vice President of Development and Construction

Colin Kreik joins DDI as its Vice President of Development and Construction. He brings extensive development experience, including ground-up construction and repositioning of institutional projects comprised of commercial, residential, retail, hospitality, mixed-use, and master plan developments. Prior to joining DDI, Mr. Kreik worked within the development management and lender advisory practices at Sterling Project Development, both in New York City and Los Angeles. He also held a four-year tenure with CDM Smith in Boston, MA as a site engineer and urban planner. Mr. Kreik holds a BLA with a focus in Urban Planning from the Boston Architectural College, and an MS in Real Estate Development from New York University. He is an active member with the Urban Land Institute.

At DDI, Mr. Kreik will be an integral member for the overall development and construction management of the RaDD life science project.

Alex Burd, Project Manager

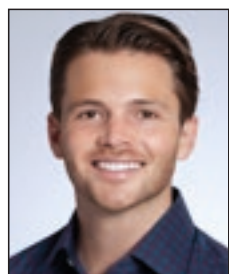
Alex Burd also joins the team as DDI's new Project Manager. He brings experience in commercial construction, preconstruction, 3D estimating, virtual design construction, and implementation. Prior to joining DDI, he held a four-year tenure with Balfour Beatty in their preconstruction department preparing estimates, coordinating virtual design, and overseeing other preconstruction services. Mr. Burd holds a Bachelor of Science degree in Construction Management from Colorado State University, as well as certificates as both a Construction Manager-in-Training (CMIT®) and Associate Design-Build Professional (Assoc. DBIA™).

With DDI, Mr. Burd will manage the demolition of the former Navy building, and assist in the development of the life science campus.

Alva Whetton, Sr. Executive Assistant & Development Coordinator

Alva Whetton returns to DDI as a Sr. Executive Assistant & Development Coordinator with decades of project management and professional administrative experience. She previously worked with DDI from 2008 to 2011 on the Manchester Pacific Gateway project, and is pleased to once again be an integral part of the Dealy Development leadership team focused on the build-out of the same site in downtown San Diego. Ms. Whetton graduated magna cum laude from California State Polytechnic University, Pomona with degrees in Hospitality and Business Management.

Returning to DDI, Ms. Whetton assists with office oversight, project management, development coordination, and problem solving to ensure the continued success of both DDI and the RaDD development.



Alex Burd



Alva Whetton



Dealy Development, Inc., 3722 Liggett Dr, Suite 101, San Diego, CA 92106, 619-374-0210

PEOPLE ON THE MOVE

HIRINGS, PROMOTIONS, BOARD MEMBERS AND SPECIAL ANNOUNCEMENTS IN SAN DIEGO



REAL ESTATE

New Hire



Melissa Plaskonos

Melissa Plaskonos has joined **Project Management Advisors, Inc. (PMA)** as Vice President, growing the firm's national life sciences team and strengthening its presence in one of the country's most prominent biotech hot spots. Plaskonos has more than two decades of experience in construction and facilities management, including in-house experience at some of the most renowned higher education institutions and biotech companies, as well as in the U.S. Navy Civil Engineer Corps. At PMA, she will lead the San Diego team serving Healthpeak Properties, a national healthcare REIT.



ENGINEERING, ARCHITECTURE AND CONSTRUCTION

New Hire



Chamberlain Duru

Burns & McDonnell, a 100% employee-owned engineering, architecture and construction firm, hires **Chamberlain Duru** as the diverse business manager for the firm's California offices. In this role, he will help advance a diverse supplier base, develop key client relationships, assist with proposal development and support project execution with a focus on growth and delivering client success.



HEALTH CARE

New Hire



Amanda Simmons

Amanda Simmons, executive vice president, Integrated Health Partners
Health Center Partners of Southern California (HCP) has appointed Amanda Simmons as executive vice president for Integrated Health Partners (IHP), its subsidiary aimed at advancing standards of quality care through a clinically integrated network. Simmons will drive overall strategy for the network, ensuring that member organizations are equipped to provide the highest-quality care for patients in the region, which spans San Diego and Riverside Counties. Simmons has dedicated her career to caring for underserved populations and improving the public health system, and she will continue her mission-based work by implementing a value-based care model for IHP.



HEALTH CARE

New Hire



Sarah Cho

Sarah Cho, vice president for population health management, Integrated Health Partners

Sarah Cho was recently appointed as vice president for population health management for Integrated Health Partners (IHP), a subsidiary of **Health Center Partners of Southern California (HCP)** aimed at advancing standards of quality care through a clinically integrated network. A trained epidemiologist, Cho will oversee the network's quality department, technology initiatives, and data analysis to improve clinical quality measures, driving change through clinical best practices and network quality support models. She has been developing IHP's centralized business intelligence platform since 2018, which works to close quality gaps and improve patient care quality.



COMMERCIAL REAL ESTATE

New Hire



Joel Warsh

Joel Warsh joins Ryan Companies US, Inc. as Real Estate Development Manager to support the company's growing senior living portfolio in Arizona, California, Colorado, Nevada, New Mexico, Utah and Washington. Based in San Diego, Warsh will help oversee entitlements; manage due diligence; support site selection, land acquisition and financial modeling; and will assist with design and construction coordination. He was most recently at Greystar as Portfolio Associate and formally at JPI as a Development Manager focusing on multifamily development in Southern California.



HEALTH CARE

New Hire



Sarah Schauman

Sarah Schauman, vice president for operations, Integrated Health Partners

Sarah Schauman joins **Integrated Health Partners (IHP)** as vice president for operations. With more than 10 years of experience working in population health management, Schauman will oversee strategic operations for IHP, a subsidiary of **Health Center Partners of Southern California (HCP)** and help the community health centers transition to alternative payment methodologies. Through a holistic model of health care, she will further the organization's mission of addressing health equity and the social needs of marginalized communities and safety-net populations.