



JASON ANDERSON

PRESIDENT AND CEO, CLEANTECH SAN DIEGO

Jason Anderson has led Cleantech San Diego since 2010. The nonprofit, funded by more than 100 businesses, educational institutions, local governments and other nonprofits, advances sustainable solutions that benefit the environment and the economy. Cleantech is a key innovation partner with the City of San Diego in its efforts as a Smart Gigabit Community. Prior to joining Cleantech, Anderson was VP of business development at the San Diego Regional EDC.



NEAL BLOOM

CEO, RISING TIDE PARTNERS

Neal Bloom graduated with an engineering degree in 2008 at the peak of the Great Recession and co-founded Portfolium to help new grads promote themselves. Since the company was acquired in 2019, Bloom has led the San Diego startup movement, chairing Startup San Diego and co-founding tech investment firm Interlock Capital as well as his San Diego-focused tech blog and podcast by Fresh Brewed Tech and the Tacos and Tech Podcast.



TED BAKER

CEO, NB BAKER ELECTRIC

Ted Baker, the fourth-generation family leader, runs the electrical contracting firm founded in 1938 that today is one of the area's fastest-growing privately held companies. Baker succeeded his father Kent in the role of president and CEO in 2000 and is responsible for all Baker Electric and Baker Electric Home Energy company operations. Baker oversees a broad spectrum of multi-million-dollar private, public works contracts and directs the development of new market opportunities.



LINDEN P. BLUE

CEO, GENERAL ATOMICS AERONAUTICAL SYSTEMS

Linden P. Blue leads the Poway-based company that builds the Predator line of unmanned aircraft. Linden's father, J. Neal Blue, and uncle, Linden S. Blue, bought the company from Chevron in 1986. After working for GA's German affiliate and managing its power inverter business, Linden joined the Aeronautical Systems in 2003 and led the company's Reconnaissance Systems Group before being named CEO in 2014. In 2017, General Atomics Aeronautical Systems was recognized for its Gray Eagle Extended Range program at Aviation Week's Annual Program Excellence Awards event.



RDML MARK BALMERT

PRESIDENT AND CEO, SAN DIEGO MILITARY ADVISORY COUNCIL

Under retired Rear Admiral Mark Balmert's leadership, the San Diego Military Advisory Council nurtures the ecosystem between the military, elected officials and the business community, driving over \$50 billion in regional economic impact to the greater San Diego area. Balmert, who since his retirement from the U.S. Navy in 2008 has worked as a defense contractor executive, is a graduate of Notre Dame and the Naval Postgraduate School. During his decorated career, he commanded the USS Chandler.



JENNIE BROOKS

SVP, BOOZ ALLEN HAMILTON

Jennie Brooks drives strategy and operations for Booz Allen Hamilton's San Diego office (1,300 employees) and the firm's business across the nation for NAVWAR. Jennie runs key firmwide DE&I programs and serves on the boards of SD EDC, Rady Children's Hospital Foundation, United Through Reading, SD AFCEA, and the SDSU College of Engineering Dean's Advisory Board.



RADM STEPHEN BARNETT

COMMANDER, NAVAL REGION SOUTHWEST

Rear Adm. Stephen D. Barnett, a native of Columbia, Tennessee, assumed command as commander, Navy Region Southwest in July 2021. Previously, as commanding officer stationed at Kaneohe, Hawaii, he led his squadron on a simultaneous deployment to Japan and Iraq, executing more than 250 missions in support of Operation Iraqi Freedom. During his tour, the squadron completed more than 950 sorties. Barnett's first flag officer assignment was as commander, Navy Region Northwest.



DAVID CARVER

PRESIDENT, GENERAL DYNAMICS NASSCO

David Carver became president of General Dynamics NASSCO as well as a VP at General Dynamics in 2019. Carver began his maritime career in 1986 at M. Rosenblatt & Sons as a junior engineer and joined NASSCO in 1987 as a management trainee. Carver has worked in many departments throughout NASSCO, including quality assurance, test and trials, repair contracts and repair production. General Dynamics NASSCO has been designing and building ships in San Diego since 1960 and is the only full-service shipyard on the West Coast.



CAPT AMY BAUERNSCHMIDT

COMMANDING OFFICER, U.S.S. ABRAHAM LINCOLN

Captain Amy Bauernschmidt is the first woman to serve as the executive officer and then as the commanding officer of a U.S. Navy aircraft carrier. Bauernschmidt assumed command of USS Abraham Lincoln in August 2021. Bauernschmidt previously served as the carrier's executive officer from 2016 to 2019. After graduating from the U.S. Naval Academy in 1994, Bauernschmidt became a helicopter pilot and was assigned to San Diego's Helicopter Anti-Submarine Squadron Light 45, known as the "Wolfpack."



RON CHAPMAN

CEO, CORONADO BREWING

Since Ron Chapman and his brother Rick opened the doors at their Coronado Island brewpub in 1996, Coronado Brewing has grown to become one of the area's top five beer makers. And Coronado is still raising the craft beer bar in San Diego. In 2019, Coronado Brewing took home two medals at the Great American Beer Festival; a silver medal for Freebooter Barleywine and a bronze for Weekend Vibes IPA.



COL. THOMAS BEDELL

COMMANDING OFFICER, MARINE CORPS AIR STATION MIRAMAR

Before taking command of Marine Corps Air Station Miramar, Colonel Thomas Bedell served as the director of the CMC Safety Division, overseeing the development of training for safety programs and managing major mishap investigations in addition to providing ongoing analysis of mishap data to eliminate future accidents. Col. Bedell has served in posts across the globe. Prior to joining the Marines, he was a wildlands firefighter for two years with the U.S. Forest Service.



MARY CHEEKS

PRESIDENT & GENERAL MANAGER, JAMUL CASINO

Mary serves as a trailblazer and role model for young women in finance and gaming professions. She is an industry veteran with 30 years of experience. She and her team have established Jamul Casino as one of East San Diego County's top destinations in less than three years. During the pandemic, she became both a local leader and an industry-wide influencer for COVID safety. Jamul Casino became one of the first casinos in the nation (and one of the first two in California) to re-open after its initial closure last March 2020. Mary has overseen numerous philanthropic efforts for the Casino, including ongoing annual campaigns to support breast cancer research and veteran's organizations. She was recently named a Large Company Winner at SDBJ's 2021 Business Women of the Year Awards.



RON COUGHLIN
CEO, PETCO

Ron Coughlin took the helm at Petco in June 2018 and is responsible for driving the company's business strategy, direction and overall performance. With more than 25 years of experience in consumer products and technology — working with some of the top brands in the world — his expertise lies in transforming businesses by honing strategy, cultivating high — performing teams, propelling innovation, re-engineering cost structures, and driving global sales and marketing. Coughlin came to Petco after four years as president of HP's Personal Systems segment.



BRADLEY FELDMANN
CEO, CUBIC

Bradley Feldmann oversees the operations of Cubic's two business divisions, Cubic Transportation Systems and Cubic Mission & Performance Solutions. During his tenure, Feldmann has transformed Cubic into a tech-driven, market-leading firm. Feldmann was appointed to Cubic's board in 2014 and was elected as chairman of the board in February 2018. As president and CEO, he managed the 2021 sale and transition of Cubic from a publicly traded company to private ownership.



CHRIS CRAMER
CEO, KARL STRAUSS BREWING

Christopher Cramer is the co-founder of one of San Diego's original craft breweries. Cramer and a college buddy, Matt Rattner, started the brewing company in 1989 with help from Cramer's uncle, Karl, who grew up brewing beer in Germany. Over the years, Karl Strauss Brewing has won numerous industry awards, both for individual brews and brewery operations as a whole. The Karl Strauss Brewing Co. was named California's Brewery of the Year for 2016 by the CalTravel Association. Cramer is a member of San Diego Rotary Club 33.



DELINDA FORSYTH
FOUNDER, ICE

Delinda Forsyth is founder and CEO of ICE, the only furniture dealership on the Inc. 5000 seven times, a feat only 1.5 percent of all U.S. firms have ever accomplished. Her company's unparalleled success led Forsyth on a quest to understand why some companies succeed while others do not. Her book -- "Inspiring Generational Leadership: Your Guide to Design a Conscious Culture" -- is a missive on lessons learned and includes numerous highlights from other San Diego leadership stories.



ERIC DEMARCO
CEO, KRATOS DEFENSE & SECURITY SOLUTIONS

Eric M. DeMarco has led Kratos since 2003 when it was Wireless Facilities. DeMarco has led the company as CEO since 2004 and in recent years has spearheaded Kratos' efforts to successfully transition from a commercial communication business to leading national security-focused provider of high performance, jet-powered unmanned aerial drone systems. Prior to joining Kratos, DeMarco was president and COO at Titan, which was later acquired by L-3.



PATRICK GOUGH
PRESIDENT AND CEO, PKL SERVICES

Patrick "Paddy" Gough, an Irish immigrant who flew for 30 years as a United States Marine aviator before retiring as a colonel, came to PKL Services in 2014, initially serving as VP of HR. He was named CEO in 2020 after serving as the aerospace services company's COO for four years. Headquartered in Poway, PKL Services was founded in 2003 by retired US Marine Corps Lieutenant Colonel Samuel Flores, Jr. Gough serves on numerous nonprofit boards and within academia and professional organizations.



SCOTT DENNIS
CEO, D&K ENGINEERING

As a co-founder and CEO of D&K Engineering, Scott Dennis provides the strategic direction to this engineering and manufacturing services firm. Dennis is also responsible for the day-to-day management of client relationships and oversight of manufacturing operations. Before launching D&K Engineering, Dennis spent several years at Hewlett Packard in various technical and leadership roles. He is also co-founder and general partner at FusionX Ventures, an early-stage investment fund focused on helping companies build the next generation of cloud-enabled Smart Machines.



KIMBERLY HARRELL
CEO, SCHUBACH AVIATION

Kimberly Herrell is a 19-year aviation industry veteran who leads the charter jet company's overall operations. Herrell joined Schubach in 2005 and was appointed president in 2018 by company namesake and founder Henry Schubach. Harrell has owned the business since January 2020. As CEO, she drives Schubach's overall vision and corporate values. Under her leadership, the company has instituted a "safety first" organizational culture, earning safety recognition exceeding the required FAA regulations.



MARK DUVALL
PRESIDENT, AEROSTRUCTURES, COLLINS AEROSPACE

Mark Duvall has been with Collins Aerospace since 2012 and heads the \$4.5 billion business unit, which designs, manufactures and services aircraft engine systems and other structural components for commercial and military customers. Headquartered in Chula Vista, Collin's business unit employs more than 6,000 associates at 15 global sites. Duvall started his aerospace career in 1982 with Allied Signal/Honeywell.



DENISE JACKSON
CEO, BALBOA TRAVEL

With more than 30 years of industry experience, Denise Jackson has worked in every aspect of leisure, corporate, meeting, group and incentive travel. Today, Jackson is responsible for all management decisions impacting the company, which has over \$200 million in annual sales. Her decision to implement a flat management structure across the organization has resulted in a more hands-on approach with both customers and employees.



KEITH JONES

MANAGING PRINCIPAL AND PARTNER, ACE PARKING

Keith B. Jones is the owner and managing partner of ACE PARKING, which was founded in 1950 and is the largest, family-owned and operated parking and mobility company in North America. Jones is passionate about honoring and improving his family's business for ACE's clients and valued team members and has been recognized and honored by the National Parking Association as a key leader in the industry. Jones served as a director at Father Joe's Villages and is actively involved in the Campaign to End Chronic Homelessness.



JEFFREY MARTIN

CEO, SEMPRA

Jeffrey Martin leads a Fortune 500 company with over \$65 billion in assets and 19,000 employees. As one of North America's leading energy infrastructure companies, Sempra's strategy is focused on building low- to zero-carbon energy networks. Previously Martin was Sempra's CFO, and also has served as CEO for San Diego Gas & Electric and other company business units.



PETER KELLY

PRESIDENT AND CEO, NATIONAL PEN

Peter Kelly has led operations at National Pen since 2016. Kelly prepared National Pen for its acquisition by Cimpres in 2016 and established a new executive leadership team to lead the business as a Cimpres brand. Kelly has also spearheaded the effort to modernize the company's legacy technology with the introduction of a new ecommerce platform. Kelley has also guided the expansion of operations into new locations.



EUGENE MITCHELL

SVP FOR DIVERSITY AND COMMUNITY PARTNERSHIPS, SEMPRA

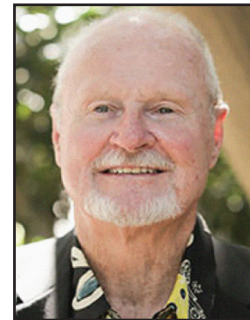
Eugene "Mitch" Mitchell is senior vice president of diversity and community partnerships for Sempra. Previously he was VP of state governmental and external affairs for SDG&E and the Southern California Gas Company, both Sempra utilities. Prior to joining the Sempra companies, Mitchell served in a variety of roles in governmental affairs and community relations, including with the City of San Diego.



MIKE KRENN

PRESIDENT AND CEO, CONNECT WITH SAN DIEGO VENTURE GROUP

Mike Krenn has been passionately growing the emerging tech and Life Science innovation communities in San Diego for more than a decade. Krenn directs CONNECT in providing mentoring to aspiring unicorn founders, helping the startups to secure funding and scale their companies. Krenn reinforces San Diego's brand in venture capital circles. By bringing 150 VCs to the region annually, he has helped more than 50 companies raise over \$200 million.



RORY MOORE

CEO, EVONEXUS

Rory Moore founded technology incubator EvoNexus in 2009 together with Vice Admiral Walter Davis. The nonprofit has since grown to be the largest tech incubator in Southern California. Moore was the seed round investor and co-founder of Peregrine Semiconductor, one of the world's leading providers of radio frequency integrated circuits for the wireless communications and aerospace markets. Moore was also the seed round investor and founding CEO of Silicon Wave, now owned by Qualcomm. In 2018, for all that he has done with EvoNexus, Ernst & Young awarded Rory the Supporter of Entrepreneurship award.



JOE KUDLA

FOUNDER & CEO, VUORI

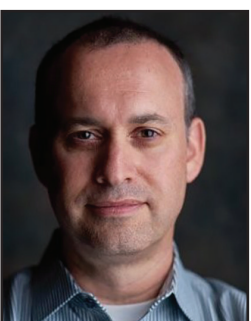
Joe Kudla launched his athleisure apparel company in 2015 as a DTC (direct-to-consumer) brand. Vuori opened its first brick and mortar store in Encinitas in 2016 and now operates nearly a dozen other stores around the country, competing head-to-head with Lululemon and other so-called 'athleisure' brands. Kudla, a former model for Dolce & Gabbana and CPA at Ernst & Young, recently secured a \$400 million investment from SoftBank Vision Fund 2 to expand his operation globally and open 100 new U.S. stores.



BRIG. GEN. JASON MORRIS

COMMANDING GENERAL, MARINE CORPS RECRUIT DEPOT, WESTERN RECRUITING REGION

Brigadier General Jason Morris currently commands the Marine Corps Recruit Depot, Western Recruiting Region, in San Diego. An infantry officer who has commanded Marines at all levels from 2nd Lieutenant to Colonel over the course of his 27-year career, Gen. Morris previously served at Marine Corps' Training Command in Quantico, Virginia. He also commanded 3d Battalion, 5th Marine Regiment during its 2010-11 deployment to Afghanistan and the 9th Marine Corps District from 2014-17 where he was responsible for recruiting across 13 Midwestern states.



NEAL MANOWITZ

PRESIDENT AND CEO, SONY ELECTRONICS

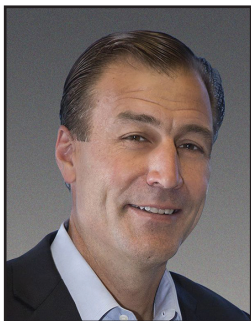
Neal Manowitz has worked for two decades in a variety of roles at Sony. Under his leadership as CEO, Sony's Interchangeable Lens Camera business is up over 300%. Additional accomplishments include the original launch of Sony into the digital camera business in 1996 and growing the business to exceed over \$100 million in revenue in its first four years. In 2010, he was inducted into the Sony's prestigious Samurai Society.



MARK NAVARRA

MANAGING PARTNER, JEROME'S FURNITURE

Mark Navarra has been the managing partner of Jerome's Furniture since 2004. The family-owned furniture store has 10 locations across Southern California and has partnered with organizations like the City of Hope, Salvation Army and Komen Foundation to give back to the community. Prior to joining Jerome's, Navarra was president of San Diego-based Navarra Properties.



TOM PELLETTE
PRESIDENT, SOLAR TURBINES

Tom Pellette is a senior vice president of Caterpillar with responsibility for Solar Turbines, a wholly owned subsidiary of Caterpillar. Solar Turbines is a global leader in the design, manufacture and service of gas turbine systems and compressors for the oil and gas and power generation industries. Pellette, who also serves as strategic advisor to the Caterpillar executive office, has held a range of sales, engineering and product support positions in Europe, Asia and the U.S. Prior to joining Caterpillar, he worked for Tennessee Gas and Leybold Technologies.



JAN THARP
PRESIDENT AND CEO, BUMBLE BEE FOODS

Jan Tharp is a transformational leader in the food and beverage industry with a reputation as a successful turnaround expert who's created order out of chaos. Tharp took the helm at Bumble Bee in 2018 after serving as the company's EVP and COO and also its SVP for global operations. Previously, she was SVP of supply chain for StarKist. Tharp has an MBA from Columbia University's School of Business.



JOHN POPE
EXECUTIVE DIRECTOR, NAVWAR

Retired Navy captain John Pope directs the Naval Information Warfare Systems Command (NAVWAR), overseeing a budget of more than \$9 billion. NAVWAR's mission is to identify, develop, deliver and sustain information warfare capabilities and services that enable joint, coalition and other national missions for the Navy and Marine Corps. Born into a military family, he has a Master's from the Naval Postgraduate School. His father was also a Navy captain.



MARCO THOMPSON
PRESIDENT, EVONEXUS

Marco Thompson is a serial entrepreneur and startup financing guru who serves as an "angel mentor" at EvoNexus, the largest tech incubator in Southern California. Thompson's key role is to help startups raise money and his portfolio has been averaging over \$200 million raised a year over the last four years. Thompson helps founders hone their pitch, presentation and business model. Then he teaches them how to raise money.



MATT RATTNER
PRESIDENT, KARL STRAUSS BREWING

Matt Rattner, a Stanford grad, is the longtime president and co-founder of Karl Strauss Brewing. Rattner also serves as chairman of the board at Endeavor Bank. At Karl Strauss, Rattner was instrumental in helping the brewery establish its distribution arm. He has been with the growing company since its founding in 1988. KSBC opened its Coronado Island brewpub in 1989, the first new brewery in San Diego since prohibition.



BARBARA WIGHT
CFO, TAYLOR GUITARS

SDSU grad Barbara Wight oversees El Cajon-based Taylor Guitars foreign operations, financial information systems and legal interests. Wight is an energetic and ethical leader with a successful track record of effectively managing business expansion, both domestically and internationally, at the musical instrument manufacturer, which recently became 100% employee-owned. She has served as a director at World Trade Center San Diego and the San Diego Water Authority.



KEVIN SAGARA
GROUP PRESIDENT, SEMPRA

Kevin Sagara oversees Semptra's California utility infrastructure businesses, San Diego Gas & Electric Co. (SDG&E) and Southern California Gas Co. (SoCalGas). Sagara, who serves as chairman for both companies, recently served as chairman and chief executive officer of SDG&E and is credited with raising the company's standing as a national leader in wildfire safety and clean energy. Previously, he was president of Semptra Renewables, overseeing all aspects of the company's 2.6-gigawatt renewable energy business unit and leading its recognition as one of the premier renewable energy companies in the U.S.



CAROLINE WINN
CEO, SDG&E

Caroline Winn, who has led San Diego Gas & Electric since 2020, is an accomplished operations management and business transformation executive with demonstrated success in shaping strategic direction, mobilizing organizational capabilities, leveraging technology and influencing senior leaders to move mission-critical strategic imperatives. Prior to taking the helm at SDG&E, Winn was the organization's COO and chief energy delivery officer. She is currently a member of the SDG&E board and also sits on the board at UC Davis Energy Efficiency Center and San Diego Regional Chamber of Commerce.



DOUGLAS SMALL
COMMANDER, NAVWAR

Rear Admiral Douglas Small assumed command of the Naval Information Warfare Systems Command in a virtual Change of Command ceremony held in August 2021 at NAVWAR Headquarters in San Diego. Small took the helm at NAVWAR after serving as the program executive officer for Integrated Warfare Systems in Washington, D.C. A native of Birchwood, Wisconsin, Small has a doctorate in physics from the Naval Postgraduate School.



PETER ZIEN
CEO, ALESMITH BREWING

Peter Zien, who founded AleSmith in 1995, has been instrumental in building the region's reputation as a craft brewing hub. An award-winning home brewer, Zien, together with his wife Vicky bought AleSmith in 2002. In 2015, the operation moved into a 105,000-square-foot space in Miramar that featured an \$11 million, 80-barrel brewing system. From its headquarters and tasting room, located at 9990 AleSmith Court, the company distributes its popular brews throughout the U.S. and across the Pacific.