



**ANNIE S. AGUILAR**  
San Dieguito  
Engineering, Inc.



**ARLINE AMORES**  
Tandem Diabetes  
Care, Inc.



**RACIEL ANDRADA**  
Turner Construction  
Company



**SOFIA BABANOVA**  
Aquacycl Inc.



**OLGA BASTIAANNET**  
Randall Lamb  
Associates, Inc.



**JENNIFER  
BAUER MORTON**  
Terramar Environmental  
Consultants



**DEANNA BEBB**  
XTRLs



**LUVELYN BENITEZ, SE**  
Coffman Engineers,  
Inc.



**PATTI BOEKAMP**  
WSP USA



**ORIANNA BRETSCHGER**  
Aquacycl Inc.



**AILEEN BULL**  
gap intelligence



**GILLIAN CARZZARELLA**  
NOVA Services,  
Inc.



**MARTHA DENNIS**  
Gordian Knot



**WHITNEY DORN**  
DPR Construction



**MISTY DUPRÉ**  
Salas O'Brien



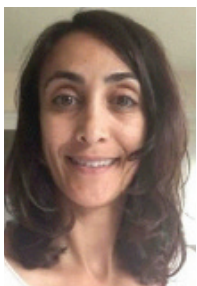
**KRISTIN ELLIOTT**  
PME



**ANTONIA  
ESTEVEZ-OLEA**  
Water Systems  
Consulting, Inc.



**RAEJEAN FERRIOLO**  
Coffman Engineers,  
Inc.



**GISELLE FINLEY**  
San Diego County



**KATHRYN FOSHA**  
Northrop  
Grumman



**JENNIFER HARRY**  
Kimley-Horn



**DR. ROBIN IHNFELDT**  
General  
Engineering &  
Research, L.L.C.



**NIRUPA KANNAN,  
PE, PMP**  
HNTB Corporation



**CARMEN KASNER, PE**  
NV5, Inc.



**DEBRA KAYE**  
V & A Consulting  
Engineers



**GLENNA MCMAHON**  
Dudek



**TIFFANY MILLER**  
DLA Piper



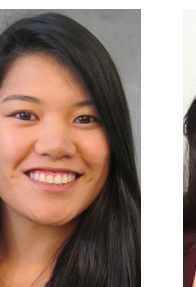
**DR. NATALIE MLADENOV**  
San Diego State  
University



**TRACY NGUYEN, O.D.**  
SWE San Diego /  
Essential Eyecare  
Optometry



**JACKIE ODOM**  
Sundt Construction



**ARIANA PADILLA**  
Turner  
Construction  
Company



**NICOLE PEACOCK**  
Dudek



**KIRSTEN PLONKA**  
Water Systems  
Consulting, Inc.



**HARSHDA PRASAD,  
SE, LEED, AP  
LPA**



**JULIA ROYSTON**  
Tandem Diabetes  
Care



**LIZETTE SALAZAR**  
Fuscoe Engineering,  
Inc.



**JUSTINA SANCHEZ**  
TUD SUD America



**TERESA SCHNEIDER**  
GMC  
Commissioning,  
Inc.



**ANISSA STANSFIELD**  
General Dynamics  
NASSCO



**MELISSA STAYNER**  
NOVA Services,  
Inc.



**LORI ANN STEVENS**  
Turner  
Construction  
Company



**SAMANTHA STURTEVANT**  
C.W. Driver



**KRIS TAYLOR**  
Latitude 33  
Planning &  
Engineering



**SUSAN TOUSI**  
Illumina



**MAYKIA VANG**  
Civil Sense, Inc.



**HOLLEY VELA**  
Turner  
Construction  
Company



**SRIVIDHYA  
VISWANATHAN**  
SCS Engineers



**SARAH WALKER**  
Water Systems  
Consulting, Inc.



**ALYSEN WEILAND**  
Psomas

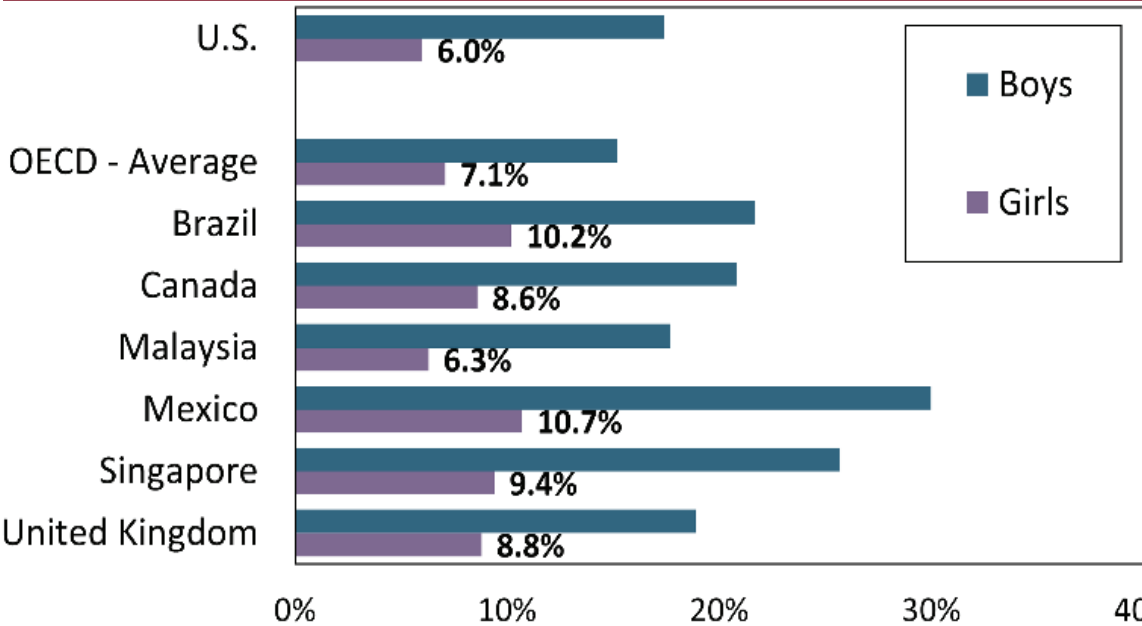


**DR. JUNFEI XIE**  
San Diego State  
University



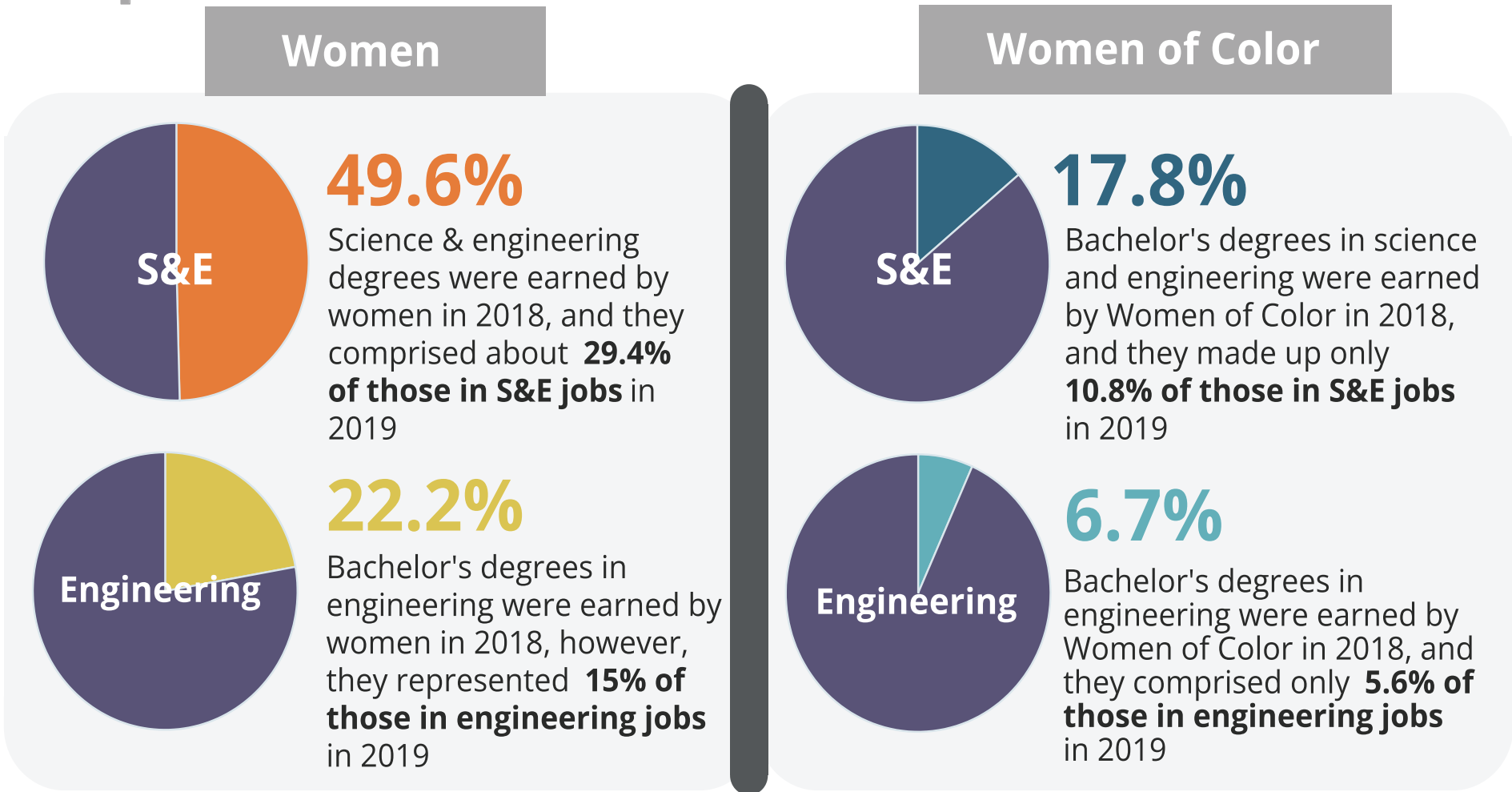


## Students' Science and Engineering Career Expectations Across the World

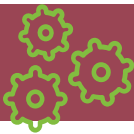


Across the globe, male students expressed science and engineering career expectations at twice the rate of young women in the 2018 PISA survey. **However, the U.S. stands out for having one of the lowest proportion (6%) of 15 year-old young women who indicate aspirations to pursue science and engineering careers.**

## From STEM Degrees to STEM Workforce



# SWE Research Fast Facts



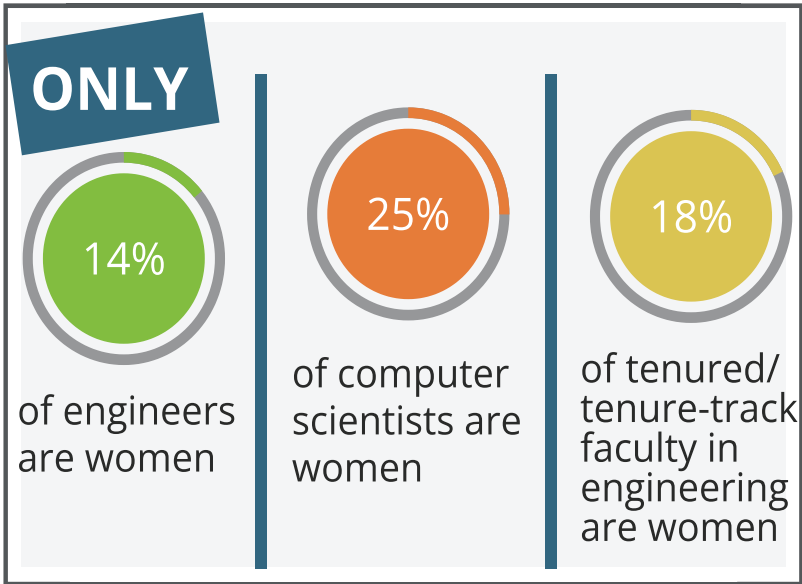
## Top 10 Engineering Degrees Awarded to Women: 2019

1	Mechanical Engineering	6	Industrial/Manufacturing/ Systems Engineering
2	Chemical Engineering	7	Electrical Engineering
3	Computer Science	8	Computer Engineering
4	Biomedical Engineering	9	Engineering (General)
5	Civil Engineering	10	Metallurgical & Materials Engineering

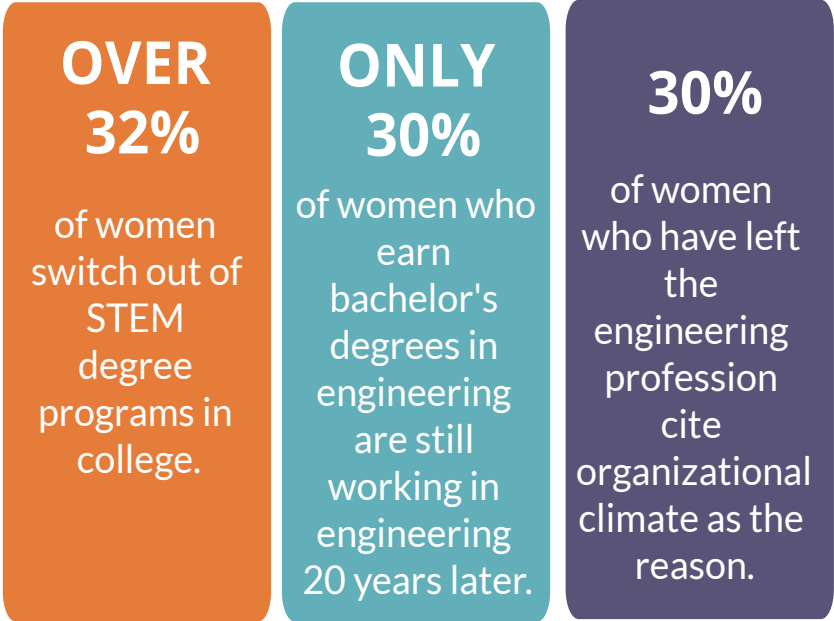


## Women in the Engineering Workforce

Female engineers earn **90¢** for every \$1 male engineers earn.



### WOMEN LEAVING ENGINEERING/STEM



**SOURCES:**

1. Corbett, C., & Hill, C. (2015). Solving the Equation: The Variables for Women's Success in Engineering and Computing. Washington, DC: American Association of University Women.

2. Fouad, N. A., Singh, R., Fitzpatrick, M. E., & Liu, J. P. (2012). Stemming the tide: Why women leave engineering. University of Wisconsin, Milwaukee.

3. Higher Education Research Institute, University of California, Los Angeles. (2019). The American Freshman: National Norms, Fall 2019 (expanded version).

4. National Center for Science and Engineering Statistics. 2021. *Women, Minorities, and Persons with Disabilities in Science and Engineering: 2021, Tables 5-3 and 9-7*

5. OECD, PISA 2018 Database, Table II.B1.8.19

6. Pew Research Center, April, 2021, "STEM Jobs See Uneven Progress in Increasing Gender, Racial and Ethnic Diversity"

7. Roy, J. (2020). Engineering by the numbers 2019. American Society for Engineering Education.

8. U.S. Department of Education, Institute of Education Sciences, National Center for Education Statistics, Digest of Education Statistics 2019, Tables 325.35 and 325.45.

9. U.S. Dept. of Labor, BLS: 11. Employed persons by detailed occupation, sex, race, and Hispanic or Latino ethnicity (Data for 2020; updated on January 22, 2021), <https://www.bls.gov/cps/cpsaat11.htm>



## SAN DIEGO BUSINESS JOURNAL WOMEN OF INFLUENCE IN ENGINEERING 2022



### ANNIE S. AGUILAR

President  
San Dieguito Engineering, Inc.

Annie S. Aguilar graduated from UC San Diego in 1991 in Structural Engineering and worked as a design engineer for John A. Martin & Associates, a 125 ENR firm in Los Angeles, until 1995. She joined the U.S. Peace Corps in 1995 to serve as a Water/Sanitation Engineer in Honduras, Central America until 1997. She worked for JAMA's San Diego office from 1997 to 2000 as a structural engineer designer. She joined San Dieguito Engineering in 2000 as a Project Engineer working on single family homes and subdivisions.

In 2011, Aguilar became CEO and President of her firm. She successfully transitioned the company from a land development civil engineering firm to a public works firm in 2012. With the retirement of senior partners, she currently runs the firm with CFO Patricia Urquiza. Now with a staff of 12, SDE is a certified woman owned business which holds several other business certifications. Aguilar can be reached at [aaguilar@sdeinc.com](mailto:aaguilar@sdeinc.com).



### ARLINE AMORES

Quality Engineering, Director  
Tandem Diabetes Care, Inc.

Arline Amores has been an engineer for almost three decades. During that time she has gained experience in industries such as semiconductors (for automotive, military and industrial products) and medical devices. She is currently director of quality engineering at Tandem Diabetes Care, a maker of products for people with diabetes who use insulin.

Amores has proven to be a dedicated leader and a positive influence on all engineers in the different industries in which she has worked. Those who know her say she matches technical expertise and capability with practical guidance. People describe Amores as supportive and a positive example to less experienced engineers, and a strong advocate for continuous learning and education. In today's dynamic working environment, Amores has demonstrated her adaptability to continue to lead and maintain a high level of engagement with her team.

She holds a Bachelor of Science degree in Chemical Engineering from Far Eastern University in the Philippines.



### RACIELI ANDRADA

Assistant Engineer  
Turner Construction Company

Raceli Andrada is currently an Assistant Engineer with Turner. Over the last three years, she has held various roles including VDC Coordinator, Site Engineer/Superintendent, and Assistant MEP Engineer. In 2020, she closed out contracts and assisted in transitioning and launching the local life science project, IQHQ Research and Development District (IQHQ RaDD), located in downtown San Diego.

Andrada is also a Team Leader for the ACE Mentoring program at a local high school and has participated in career panels at local middle schools and Cal Poly Pomona's ASCE general meetings. Within Turner, Andrada is a chair of the Future Leaders Group, an employee resource group for young professionals to network, grow their career, and give back. Andrada has previously taught BIM for the Turner School of Construction Management and is involved in recruitment at her alma mater as well as on national conferences. Andrada holds a bachelor's degree in civil engineering from Cal Poly Pomona. She can be reached at [randrada@tcco.com](mailto:randrada@tcco.com).



### SOFIA BABANOVA

Co-founder and CTO  
Aquacycl

Dr. Sofia Babanova holds a Ph.D. in electrochemistry with her research resulting in five patent filings and 48 contributions to scientific publications. Dr. Babanova held the position of Adjunct Research Assistant Professor at the University of New Mexico for five years before going on to co-found Aquacycl in 2016.

An award-winning cleantech company, Aquacycl now provides the only modular, plug-and-play system for cost-effectively treating high-strength wastewaters generated from the food and beverage industry. As the company's CTO, Dr. Babanova leads the development, evaluation and implementation of highly innovative technologies for wastewater treatment based on bioelectrochemical systems.

She previously worked as the Director of Bioelectrochemical Systems Development at D4C Product Development Inc. in San Diego. Concurrently with her work at the University of New Mexico, she worked as a staff scientist at the J. Craig Venter Institute, developing bioelectrochemical systems for wastewater purification at lab and pilot scales.



### OLGA BASTIAANNET

Associate Principal & Director of  
Marketing  
Randall Lamb Associates, Inc.

Olga Bastiaannet is an associate principal and serves as the director of marketing for engineering firm Randall Lamb. Her role includes business development, marketing, proposal development, administration, assisting with recruiting and more. She has played a key role in winning several recent projects with clients including UC San Diego. She is a passionate mentor and takes pride in the important female perspective she brings to a male-dominated building engineering industry. She has participated in mentorship programs with Commercial Real Estate Women (CREW) San Diego and Society for Marketing Professional Services (SMPS), and has held committee, sponsor and board roles with those organizations.

Bastiaannet is the co-founder of Hope for a Cure Foundation, which raises money to purchase lab equipment utilized by local cancer research facilities. She received her Bachelor of Arts in Interior Design from Western Washington University. She can be reached at (619) 944-0463 or [OBastiaannet@randalllamb.com](mailto:OBastiaannet@randalllamb.com).



RANDALL LAMB



### JENNIFER BAUER MORTON

Owner/Principal Geologist  
Terramar Environmental Consulting

Jennifer Bauer Morton is a licensed Professional Geologist who has been working in the environmental consulting industry for over 16 years, supporting commercial real estate transactions and site cleanups. Morton landed in the environmental industry after college and supported numerous assessment and remediation projects at contaminated properties throughout Southern California. She has worked with engineers to develop remediation systems used to clean up soil and groundwater and has developed site mitigation plans which help to keep the community safe from contamination. She has successfully worked with regulatory agencies to develop sound assessment and mitigation programs to move cases toward closure. Her career evolved into conducting environmental due diligence, and she eventually set out on her own as the founder of Terramar Environmental Consulting. She is also a teacher and the editor of "Coast to Cactus: Geology and Tectonics, San Diego to the Salton Trough." She can be reached at (760) 715-3154 or [jen@terramar-environmental.com](mailto:jen@terramar-environmental.com).



### DEANNA BEBB

Founder and President  
XTRLs

Deanna Bebb founded XTRLs in 2011 with the mission of delivering step-change technologies and engineering services in the area of automated energy management. She has since led the company to a position as a successful, profitable provider of unique smart-grid, renewable energy, and energy efficiency solutions to government, commercial, industrial and institutional customers.

Prior to founding XTRLs, Bebb's career was dedicated to technology in the industrial automation, control systems and networking industries. Prior to XTRLs, she had founded and grew a San Diego headquartered controls systems engineering that was sold in a trade sale, after receiving an international private equity firm's investment. She previously held management positions at Tachyon, Systems Integrated, and TeraGlobal Communications, all in San Diego. She is the recipient of numerous industry awards. She holds an MBA from Pepperdine University with an emphasis in Entrepreneurship. She can be reached at (858) 652-8450 or [dbebb@power-and-energy.com](mailto:dbebb@power-and-energy.com).



### LUVELYN BENITEZ, SE

Senior Discipline Manager, Structural  
Engineering  
Coffman Engineers, Inc.

Luvelyn Benitez is a 15-year veteran at Coffman Engineers, Inc. with more than two decades of structural engineering experience in San Diego. Throughout her career, Benitez has demonstrated a passion for solutions and established herself as a go-to resource for architects and contractors alike.

In addition to her regular full-time jobs of being a mom and providing innovative structural engineering for some of San Diego's most prominent buildings, like the DBIA award-winning BioLegend campus, Benitez is highly active in the AEC community. She has served on the Structural Engineering Association of San Diego Board of Directors for two years and is heavily involved in various other committees. As current chair of the SEAOSD SE3 Committee, she works to raise awareness and improve employee engagement, equity and retention within the structural engineering profession.

Benitez is instrumental in professional mentoring, training Coffman's young engineers on structural design and best practices for client support.





SAN DIEGO BUSINESS JOURNAL  
WOMEN OF INFLUENCE IN ENGINEERING 2022



**PATTI BOEKAMP**  
Senior Director | Local Business Leader  
WSP USA

Patti Boekamp has over 35 years of transportation and capital improvement project delivery experience within the San Diego region. Following progressively more responsible city posts (including Deputy Director of Traffic Engineering and Chief Deputy Director of the Engineering & Capital Projects Department), Boekamp served six years as the City of San Diego's Director of Engineering and Capital Projects, managing the delivery of the city's multimillion-dollar capital improvements program (including all infrastructure types). Along the way she was given several special assignments and projects including serving as the City Manager's Council Liaison, transportation Liaison for two Super Bowls, overseeing the Petco Park (Ballpark) Infrastructure Project and the Ballpark itself, and Interim Director of the Development Services Department. Boekamp also brings excellent interpersonal skills to the job. She understands the challenges and needs of every team working around her and plays a significant role leading them to overcome the new challenges of the XXI century.



**ORIANNA BRETSCHGER**  
Founder and CEO  
Aquacycl Inc.

Dr. Orianna Bretschger, Ph.D., received a B.S. in Physics and Astronomy at the University of Northern Arizona. After a career in aerospace and government consulting, she found her way to water while completing a Ph.D. at the University of Southern California. During her graduate work, she studied how microbes remove pollutants from water and produce electricity at the same time.

In 2008, Dr. Bretschger joined the J. Craig Venter Institute in San Diego where she expanded her research in this area and began developing technologies for distributed wastewater treatment. Her research has resulted in 34 journal articles, three book chapters and 11 patent filings.

In 2016, Dr. Bretschger founded Aquacycl with her partners. An award-winning cleantech company, Aquacycl now provides the only modular, plug-and-play system for cost-effectively treating complex industrial wastewaters. The system rapidly treats high-strength wastewater, eliminates primary sludge and recovers energy as direct electricity, with no methane.



**AILEEN BULL**  
Software Engineer  
gap intelligence

Aileen Bull graduated from University of Florida with a degree in Microbiology. After graduation, she served as a promotional tour manager for brands such as Spam, HEB, Ford, Nintendo and 5 Hour Energy. Bull then turned her focus to software development, attending Epicodus and immersing herself in projects and experiences that would prepare her to become a full stack engineer. In that time Bull built web applications using HTML, CSS, Javascript, jQuery, Ruby, PostgreSQL, ActiveRecord, Ruby on Rails, APIs, AJAX and Ember.js. Following her time at Epicodus, she took an internship with Antenna.is where in a short time she implemented an automated publisher sign up and domain ownership verification system.

Bull is constantly evolving in her knowledge and skill set, even obtaining her Scrum Master Certification. She now serves as a full stack software engineer for gap intelligence, a market intelligence company, where she is an instrumental part of its Development Team.



**GILLIAN CARZZARELLA**  
Senior Engineer  
NOVA Services, Inc.

Gillian L. Carzzarella, PE is a Senior Engineer at NOVA Services. She has a B.S. and M.S. in Civil Engineering, and graduated from Manhattan College in New York City. She has 10 years of experience in the industry, and is a licensed Professional Engineer in California. She has developed and maintained numerous relationships with clients and prioritizes client satisfaction. She has a passion for mentoring and teaching younger staff.

Carzzarella is experienced in all stages of geotechnical design including developing the scope of work, coordinating fieldwork, interpreting findings, performing calculations, and providing recommendations. She is experienced in overseeing geotechnical construction, and providing additional recommendations as needed during the construction phase. She was part of the Hurricane Sandy Disaster Relief effort in 2012, performing home inspections in Queens and Staten Island and making inspections to several beach boardwalks. Among her high-profile projects is Franklin Antonio Hall at UCSD. She can be reached at gcarzzarella@usa-nova.com.



**DR. MARTHA DENNIS**  
Principal  
Gordian Knot

Dr. Martha Dennis is Principal at Gordian Knot, an advisory firm to emerging technology businesses in San Diego. Formerly, she was a Venture Partner with Windward Ventures; and Co-founder, President and CEO of WaveWare Communications, Inc., which sold software for wireless handheld connectivity. She co-founded Pacific Communications Sciences, Inc., a San Diego wireless communications equipment company acquired by Cirrus Logic. Earlier, Dr. Dennis led software development at Linkabit Corp. as Assistant Vice President. Until recently she served as Chairman of the Board of Netsapiens, Inc., which was acquired by Crexendo in 2021. In addition, she served as Director of Space Micro which was acquired by Voyager Space Holdings in 2021. She currently serves as a Director of Mundoval. She holds a doctorate from Harvard University and a bachelor's degree from Smith College. Her extensive volunteer work includes service on the Dean's Council of Advisors of the UCSD Jacobs School of Engineering.



**WHITNEY DORN**  
Project Executive  
DPR Construction

Whitney Dorn is an executive at San Diego's DPR Construction. She has spent the majority of her career in operations, working on notable life science and technology projects including the Sanford Burnham Institute, the former Pfizer campus in Torrey Pines, the Mission Pacific Hotel and Seabird Resort in Oceanside, and a 73-acre technology campus project in Irvine. In 2008, Dorn stepped up to lead DPR's sustainability initiatives in the Southwest to help customers develop and implement strategies that address environmental, social and economic concerns.

In 2018, she joined the DPR San Diego leadership team where she is part of leading over 500 employees and more than \$500 million in volume each year. As part of DPR's Global Social Responsibility Leadership Group, Dorn leads the philanthropy efforts at DPR and serves as president of the DPR Foundation whose vision is Building Possibilities for Under-Resourced Youth. She is also passionate about bringing more women into the industry.



**MISTY DUPRÉ**  
Senior Vice President  
Salas O'Brien

Misty DuPré, PE has been in the San Diego engineering industry for over 20 years. She has risen from an entry level position to Senior Vice President in one of the country's most prestigious multi-discipline engineering firms, Salas O'Brien (previously known as T-Squared Professional Engineers), with a staff of more than 1,300 professionals. She has been involved in more than 700 projects in Southern California as well as projects throughout the nation, including federal, educational, hospitality, multifamily, healthcare and industrial projects. She has completed numerous complex projects including the complete design of a five-star, eight-story hotel in Southern California.

A strong supporter of the next generation of talent, she has trained and mentored numerous young engineering professionals. She is also a key figure in the firm's important organizational decisions. She received her bachelor of science in architectural engineering from the University of Wyoming. She can be reached at misty.dupre@salasobrien.com.



**KRISTIN ELLIOTT**  
CEO  
PME

Kristin Elliott is CEO of Precision Measurement Engineering, Inc. (PME), a leading manufacturer of oceanographic and freshwater sensor monitoring equipment based in San Diego. Elliott joined her family's business in 2005 and is successfully creating a dynamic and dedicated team, defining the company vision and increasing growth. During her tenure as CEO, she has tripled the company's annual revenues as well as advanced the company's employee roster. Elliott has also expanded the company and the scope of work to include a second company, Aquasend, which provides aqua farmers with revolutionary technology, communications and management. The unique business model allows farmers to implement 24/7 water quality monitoring at an affordable price.

Elliott is also involved in several organizations including the San Diego Entrepreneur's Organization and serves as a Start Blue Accelerator Mentor. She holds bachelor's degrees in Communication and Sociology from UC San Diego, as well as an MBA from Cal State University, San Marcos.





## SAN DIEGO BUSINESS JOURNAL WOMEN OF INFLUENCE IN ENGINEERING 2022



**ANTONIA ESTEVEZ-OLEA**  
Associate Engineer  
Water Systems Consulting, Inc.

**A**ntonia Estevez-Olea is a Professional Engineer in water and wastewater asset management at Water Systems Consulting (WSC). She is an emerging leader for creating a better water future in San Diego and California through excellence in engineering.

She has led several local projects including 2020 Urban Water Management Plans for the City of Escondido and Valley Center Municipal Water District. She is currently serving as Deputy Project Manager for Replenish Big Bear, a recycled water program in California's Big Bear Valley that is designed to increase the resiliency of potable water supplies, vulnerable habitats, and recreation activities that support the community and local economy.

Estevez-Olea is committed to advancing access to engineering for underrepresented community members. This includes volunteering at Orange Glen High School, a school with minority enrollment of 93%, to promote higher education and provide insight into engineering career paths. She advocates for diversity within her own company as well.



**RAEJEAN (RAE) FERRIOLO**  
Senior Discipline Manager, Electrical Engineering  
Coffman Engineers, Inc.

**R**ae Ferriolo has 14 years of experience in electrical engineering for mixed-use, educational, military living and recreational facilities. In addition to her full-time jobs of being a mom and providing innovative electrical engineering for some of San Diego's most prominent structures, like the award-winning Rex's Roar statue at the San Diego Zoo, Ferriolo has extensive experience in sustainable design such as LEED, Savings by Design, 2030 Challenge and NetZero. Ferriolo's project experience includes electrical consulting using national and California Building, Electrical and Energy Codes.

Ferriolo is also highly involved in the Coffman mentorship program, which matches younger engineers with a more seasoned mentor in the company. The mentors help provide their mentees with career/business guidance towards the goals of both Coffman and the employee. Ferriolo is a natural leader, a trusted advisor and a veteran team member who has a huge influence on the projects Coffman Engineers pursues and the success of the firm.



**GISELLE (GIGI) FINLEY**  
Professional Public Works Engineer  
San Diego County

**G**iselle (Gigi) Finley is an engineering professional with 20 years of top-caliber design, operations, maintenance and management experience within the public work sector. She combines a strong technical background with customer service-based expertise to drive excellence and efficiency, and to promote positive outcomes.

She is responsible for the oversight and approval of all public and private development project improvements within the County of San Diego. She is responsible for the operation and maintenance of 202 traffic signals and over 10,000 streetlights to provide the safety of pedestrians, bicyclists and others through the street networks. She has taken a leadership role in multiple projects for the upgrade of critical infrastructure.

Finley has demonstrated the ability to align workplace customer-based objectives while providing sound technical recommendations to enhance public infrastructure. She uses her well-honed supervisory skills to build productive working environments and promote knowledge-sharing.

She can be reached at (858) 935-5705 or [giselle.finley@sdcounty.ca.gov](mailto:giselle.finley@sdcounty.ca.gov).



**KATHRYN FOSHA**  
Engineering Director and Global Hawk International Chief Engineer  
Northrop Grumman

**K**athryn Fosha is the engineering director and Global Hawk International Chief Engineer responsible for leading the engineering organization supporting International Programs. These programs include contracts with NATO, the Republic of Korea and Japan. In this role, Fosha has successfully led a cross functional team to complete a significant radar overhaul on time that exceeded performance requirements in support of on-time delivery of aircraft and ground segments to end customers. Fosha focuses on coaching her team through risk-based decision framework and horizontal integration across disparate functional areas growing future talent within the organization. Her efforts have been recognized by the U.S. Air Force program office for increasing product quality in addition to collaboration and communication of complex technical issues.

In her personal time, Fosha is a pilot holding both private single engine and commercial glider certificates. Fosha holds a M.S. in Aerospace Engineering from USC, and undergraduate degrees from Colorado State University.



**JENNIFER HARRY**  
Principal  
Kimley-Horn

**A** Principal and leader with Kimley-Horn, Jennifer Harry, PE, LEED AP has more than 24 years of experience in private land development projects and public municipal projects. Her recent experience includes heavy rail design, industrial, retail, roadway and transit facilities. Many of her clients bring repeat business to Kimley-Horn, in part due to her sincere dedication to her clients and her innate ability to easily navigate the land development process and the complicated entitlements and permitting process from start to successful finish. Jennifer Harry is crafty and creative in finding solutions and delivers on impossible timelines for her clients. She has a passion for integrating and mentoring others, leads a team of more than 50 people, and is a leader not only within the San Diego office and California region, but within the entire firm as well. She can be reached at [jennifer.harry@kimley-horn.com](mailto:jennifer.harry@kimley-horn.com).



**DR. ROBIN IHNFELDT**  
CEO and Owner  
General Engineering & Research

**D**r. Robin Ihnfeldt is CEO and 100% owner of General Engineering & Research (GE&R), a cleantech company developing magnetic refrigeration that is lower-cost and more energy efficient than current technologies for cooling and storing cryogenic liquids. Since 2012, Dr. Ihnfeldt has been awarded more than \$7 million in grant funding from the National Science Foundation, the Naval Research Laboratory, the Department of Energy, and the California Energy Commission. She has successfully built an industrial laboratory and manufacturing facility, and has conceived, developed, and commercialized products resulting from grant awards through direct sales and licensing. Dr. Ihnfeldt previously spent more than a decade in development and manufacturing environments including at Micron Technologies Inc., Pfizer and Nitto Denko Technical. Her technical expertise includes semiconductor manufacturing, nanomaterials and magnetocaloric materials and device synthesis. Dr. Ihnfeldt is also a licensed patent agent and handles all of GE&R's IP. She can be reached at (858) 736-5069 or [rihnfeldt@geandr.com](mailto:rihnfeldt@geandr.com).



**NIRUPA KANNAN, PE, PMP**  
Senior Project Manager  
HNTB Corporation

**N**irupa Kannan, PE, PMP is a registered Civil Engineer with 16 years' experience with complex infrastructure programs. She joined HNTB Corp. in 2020 as Senior Project Manager based in San Diego. Her multidisciplinary background encompasses various transit, highway, roadway and active transportation projects as project manager and engineering lead.

Kannan is respected for her expertise and ability to manage projects through all phases, from conceptual planning, through delivery of final design, permitting and construction. Kannan served as the Civil Task Manager for the final design phase for the San Diego Association of Governments' recently completed, multibillion-dollar Mid-Coast Corridor Transit Project. She led a large team of in-house engineers and sub-consultants and provided the right combination of expert leadership, technical capabilities, and project management skills. In addition to her track record of successful project delivery, Kannan has a passion for mentoring and supporting younger engineers. She can be reached at (619) 684-6588 or [nkannan@hntb.com](mailto:nkannan@hntb.com).



**CARMEN KASNER, PE**  
Sr. Vice President, Regional Managing Director  
NV5, Inc.

**C**armen Kasner is on the Board of Directors for Leap to Success, a nonprofit focused on empowering women that have been in abusive relationships. She has organized fundraisers for them for nearly 10 years. She is Vice President of the San Diego Imperial County Chapter of American Public Works Association and is on their planning committee for the National PWX event in 2023. She is a Past President of the San Diego Section of American Society of Civil Engineers. She is very involved with Mira Mesa High School Theater and Instrumental Music programs. When she joined NV5 she set a local goal of having the office have a community service project every quarter. While COVID has made this more difficult, the office has spent countless hours with beach cleanups, food drives and working with the food bank, working on the Midway, and supporting the Community Resource Center's holiday shopping event. She can be reached at (760) 525-9995 or [Carmen.Kasner@nv5.com](mailto:Carmen.Kasner@nv5.com).





CONGRATULATIONS TO OUR 2022 SDBJ WOMEN OF INFLUENCE IN ENGINEERING



SAN DIEGO STATE  
UNIVERSITY

**Natalie Mladenov**

Associate Professor & William E. Leonhard Jr. Chair  
Civil, Construction, & Environmental Engineering

**Junfei Xie**

Assistant Professor  
Electrical and Computer Engineering

WOMEN WHO SHAPE THE FUTURE.  
RESEARCH THAT CHANGES THE WORLD.  
AN INNOVATION DISTRICT THAT FUELS DISCOVERY.

AT THE SDSU MISSION VALLEY INNOVATION DISTRICT, RESEARCHERS WILL COME TOGETHER  
WITH PUBLIC AND PRIVATE PARTNERS TO ADDRESS SOCIETY'S MOST PRESSING PROBLEMS.  
BREAKING GROUND IN 2023.





## SAN DIEGO BUSINESS JOURNAL WOMEN OF INFLUENCE IN ENGINEERING 2022



**DEBRA KAYE**

President  
V&A Consulting Engineers

**D**ebra Kaye brings a broad range of knowledge with more than 35 years of experience in the water industry. She has held many positions while working for publicly owned and investor owned water agencies including General Manager, Operations and Maintenance Manager, Design Engineer, Planning Engineer, Water Plant Foreman, Water Plant Operator, Meter Reader and Customer Service Representative.

She owned her own consulting business, has worked as a Client Services Manager for a large engineering firm, held the position of Vice President of a UV Technology company and is currently the CEO and President of V&A Consulting Engineers, which focuses on infrastructure preservation for the water, wastewater and transit industries. She became the firm's majority owner in 2019. Kaye earned a BS in Civil Engineering from the University of Nevada Reno. She is a licensed Professional Engineer in the states of Nevada and California. She can be reached at (619) 436-5789 or dkaye@vaengineering.com.



**GLENNA MCMAHON**

Hydrogeology and Hazardous Waste  
Practice Leader  
Dudek

**G**lenna McMahon is a Professional Engineer registered in California and a Certified Environmental Manager registered in Nevada. She has maintained her 40-hour Occupational Safety and Health Administration (OSHA) Hazardous Waste Operations and Emergency Operations certification since beginning her career as well as other OSHA hazmat-related certifications. McMahon has worked on numerous projects throughout California, from Phase I and II Environmental Site Assessments (ESAs) for colleges and universities, tribal lands, commercial spaces, and municipalities, to overseeing remediation/cleanup efforts at former manufacturing facilities, leaking underground tank sites, and former agricultural sites, to providing hazards and hazardous materials expertise on a wide range of CEQA and NEPA projects.

As practice leader in Dudek's Hydrogeology and Hazardous Waste (Hydro/Haz) group, McMahon oversees site assessment and remediation projects. She has been a long-time manager of ongoing monitoring and remediation projects in Stockton and Las Vegas. She can be reached at (760) 479-4130 or gmcMahon@dudek.com.



**TIFFANY MILLER**

Partner  
DLA Piper

**T**iffany Miller, a partner at the DLA Piper law firm, represents some of the biggest technology companies in their high profile patent litigation matters. She draws on her Electrical Engineering degree from Cal Poly San Luis Obispo and work experience as well as her J.D. from the University of San Diego School of Law.

Miller has represented clients in litigation relating to cellular communications, wireless devices, electronics, computer architecture, storage architecture, sensors and wearable technology. Her practice includes district court litigations spanning multiple jurisdictions in the United States, International Trade Commission investigations, and post grant review proceedings at the patent office. Miller also counsels clients on freedom to operate and patent portfolios, including standards essential patent portfolios. She also has significant experience in patent application preparation and prosecution in the technology areas of communications, signal processing, electronics, mechanical systems and semiconductor manufacturing. She can be reached at (619) 699-3445 or at tiffany.miller@us.dlapiper.com.



**DR. NATALIE MLADENOV**

Associate Professor of Environmental  
Engineering  
San Diego State University

**D**r. Natalie Mladenov is an associate professor of Environmental Engineering and Director of the Water Innovation and Reuse Laboratory (WIRLab) at San Diego State University. Over her 20+ year career in academia and industry, she has led projects that span a range of engineering and interdisciplinary science topics, from designing ladders for endangered fish in western U.S. rivers to evaluating the performance of low-cost sanitation systems in South Africa. Dr. Mladenov has recruited, trained and mentored over 80 undergraduate and graduate students, most of whom are underrepresented minority, transfer, and first generation engineering students. Dr. Mladenov has coordinated international research on sustainable sanitation and documented the positive impacts of these authentic research experiences on students' self-efficacy and confidence as engineers. As co-lead of the SDSU Big Idea, "Reimagining Transboundary Water," Dr. Mladenov also catalyzed new collaborations to address water quality and water scarcity issues in the U.S.-Mexico border region. She can be reached at (619) 594-0725 or nmladenov@sdsu.edu.



SAN DIEGO STATE  
UNIVERSITY



Congratulations  
**Olga Bastiaannet**  
for being recognized as a  
**Woman of Influence  
in Engineering!**

Randall Lamb is thrilled to congratulate our very own, Olga, for well-deserved recognition. We appreciate all that you do, and are proud to have you on our team. Thank you for your hard work, leadership and innovation!



RANDALL LAMB

**Olga Bastiaannet** | Associate Principal, Randall Lamb

MEP Engineering | Sustainable Design | [www.RandallLamb.com](http://www.RandallLamb.com)  
*Distinction and dedication built into every design*



SAN DIEGO BUSINESS JOURNAL

WOMEN OF INFLUENCE IN ENGINEERING 2022



**TRACY NGUYEN, O.D.**  
SWE San Diego Outreach Chair / Optometrist  
SWE San Diego / Essential Eyecare Optometry

Dr. Tracy Nguyen, O.D. is on a mission to close the gender gap in STEM fields through her support of girls and underserved students in robotics and engineering. She believes it is critical to pique children's interest in STEM in elementary and middle school and cultivate this interest through high school. Dr. Nguyen has influenced thousands of underrepresented youth to pursue engineering careers. Although a practicing optometrist and informal educator, she is an enthusiastic outreach advocate who wholeheartedly embraces the Society of Women Engineers' mission and vision of empowering women to reach their full potential in engineering careers and achieve parity and equity, maybe even in her lifetime.

Dr. Nguyen is the recipient of several awards including the SWE WE Local Engaged Advocate Award 2021, National Center for Women & Information Technology Educator Award Honorable Mention 2021, and SWE San Diego K-12 Volunteer of the Year 2021.

She can be reached at (858) 682-4222 or outreach.swesandiego@gmail.com.



**JACKIE ODOM**  
Project Engineer  
Sundt Construction

Jackie Odom joined Sundt Construction in 2017 and is currently part of the Sundt Concrete Division. She serves as a Project Engineer on work with an estimated value of \$70 million.

She has been involved with specialty and technically involved concrete structural items like Post-tension Reinforcing and Mass Concrete. She has worked on many of Sundt's self-performed structural concrete projects including Cal Poly Pomona Sicomoro and Secoya Residence Halls and Centerpointe Dining Commons, the NICB Ontario Mill Repower Project, the San Diego International Airport Facilities (including the 3.2 million gallon storm water concrete cistern), and the six-story Cal State Fullerton Student Housing project.

Odom holds a Bachelor of Science Degree in Construction Engineering Management from CSU Long Beach. Sundt recruited her from the Associated Schools of Construction (ASC) Student Competition. Looking ahead, Odom wants to pave the way for other Asian-American women to show them there is no limit to what they can do.



**ARIANA PADILLA**  
Engineer  
Turner Construction Company

Ariana Padilla started her career with the San Diego office of Turner, working as an intern on the Cross-Border Xpress Facility (CBX) in Otay Mesa. During the first seven years of her career, she has worked on two large, multibillion dollar aviation projects: LAX Midfield Satellite Concourse and the San Diego International Airport New Terminal 1.

She was selected as an Innovation Thought Leader at Turner after implementing a tool to manage and visualize sales information with Business Intelligence (BI) software. Padilla earned a BS in Structural Engineering from UC San Diego. She also holds a graduate degree from California State University Long Beach, earning her MBA while working full-time. She is a leader within Turner's Future Leaders Group, planning and executing events with the goal of creating opportunities for networking, connection and professional development for people in the early stages of their careers. She can be reached at [aspadilla@tcco.com](mailto:aspadilla@tcco.com)



**NICOLE PEACOCK**  
Senior Environmental Engineer  
Dudek

Nicole Peacock is an environmental engineer and geologist with 23 years' experience with hazardous waste investigation and remediation projects. She began working in the environmental consulting industry conducting Phase I Environmental Site Assessments (ESAs) and groundwater monitoring while a teenager in college. Peacock received dual bachelor's degrees in Civil and Environmental Engineering and Geology from UCLA and followed up her degrees with both Professional Engineer and Professional Geologist licenses.

For the past 20 years, Peacock has worked for Dudek, a mid-sized environmental consulting company in Encinitas. During that time, she has managed soil, soil vapor, and groundwater investigation and remediation projects and provided litigation support and cost allocation among potentially responsible parties (PRPs) for hazardous waste sites. In addition to mentoring junior staff at Dudek, she has volunteered at the local elementary school to teach about geology, storm water pollution prevention, and engineering careers.

She can be reached at (760) 479-4152 or [npeacock@dudek.com](mailto:npeacock@dudek.com).



Congratulations  
Racieli, Ariana,  
Lori Ann and  
Holley!



RACIELI ANDRADA



ARIANA PADILLA



LORI ANN STEVENS



HOLLEY VELA

Congratulations to all of the 2022 Women of Influence in Engineering!  
Your leadership, commitment, and vision inspire and elevate all women in the industry.



SAN DIEGO BUSINESS JOURNAL

WOMEN OF INFLUENCE IN ENGINEERING 2022



**KIRSTEN PLONKA**  
Vice President  
Water Systems Consulting, Inc.

Kirsten Plonka brings nearly 20 years of experience in the planning, design, and management of water, wastewater, and recycled water systems. She specializes in project management, water resource planning, and master planning, including Capital Improvement Plans and budgeting. She is well versed in funding alternatives and has successfully secured over \$55 million in grant funding and low interest loans for public agencies.

With a career focus in water, Plonka has managed many water initiatives in the county as a public employee of community water systems including the City of Carlsbad and Rainbow Municipal Water District. Today, she is a Vice President with WSC and company lead for the San Diego office. Recent achievements include managing 22 risk and resilience assessment and emergency response plans for California water agencies in 2021, as newly required under the America's Water Infrastructure Act. She can be reached at (619) 961-0929 or [kplonka@wsc-inc.com](mailto:kplonka@wsc-inc.com).



**HARSHDA PRASAD, SE, LEED AP**  
Senior Project Manager, Structural Engineering  
LPA

Harshda Prasad leads the engineering practice in San Diego for LPA, a national integrated design firm, spearheading major civic, education, life science and biotech projects throughout San Diego while providing her technical expertise to the firm's clients nationwide. Known firmwide for her empathetic leadership style, she is a passionate advocate for advancing women in the engineering profession. Prasad founded and leads LPA's Women in Engineering Group and is currently in the process of founding a Women in Structural Engineering Group (WISE) for the Structural Engineers Association of San Diego (SEAOSD); Prasad also serves as treasurer for SEAOSD.

An LEED accredited professional with a Master of Science in Engineering from the University of Texas, Prasad is a registered structural engineer and registered professional engineer. With more than 15 years of experience, Prasad served as a structural engineer for major landmarks nationwide including Dallas Cowboys Stadium. She can be reached at (619) 929-3942 or [hprasad@lpadesignstudios.com](mailto:hprasad@lpadesignstudios.com).



**JULIA ROYSTON**  
Vice President, Quality  
Tandem Diabetes Care

Julia Royston was appointed as Vice President, Quality at Tandem Diabetes Care in August 2017. She previously served as Senior Director of Quality and has overseen the department since September 2013. She has more than 25 years of experience in quality, regulatory and customer affairs. Prior to joining Tandem, Royston served as Director of Quality for the Infusion Business Unit of CareFusion. Before that, she held positions including Executive Director of Regulatory and Customer Affairs for OphthoX and Quality Assurance Director at American Medical Systems (Formerly CryoGen Inc.). She holds a Bachelor of Science in Mechanical Engineering from San Diego State University.

Those who know her describe her as a role model, mentor and advocate to the entire organization, and especially to women and minorities. She is one of the strongest supporters of the Tandem Diversity, Equity, and Inclusion employee resource group.

She can be reached at (858) 255-6390 or [JKen-sick@tandemdiabetes.com](mailto:JKen-sick@tandemdiabetes.com).



**LIZETTE SALAZAR**  
Associate Project Manager  
Fusco Engineering, Inc.

Lizette Salazar's dedication to the civil engineering profession is evident in her rapid rise at Fuscoe Engineering to Associate Project Manager in two years. Salazar has added great talent to Fuscoe's San Diego regional office and is known for having both exceptional technical skills and an enthusiastic "can-do" attitude.

As part of Fuscoe's Renewable Energy & Utilities team, she has provided design consultation on utility-scale solar projects and has taken on a lead role within the team. Her expertise, creative design solutions and attention to detail are appreciated by both her peers and the clients she serves. Salazar has provided services for notable energy projects that include Big Beau Solar in Kern County, Daggett Solar in San Bernardino County and Maverick Solar in Riverside County. Combined, these projects have a capacity of over 1.1 gigawatt.

Salazar graduated from San Jose State University with a B.S. in Civil Engineering. She can be reached at 858.554.1500 or [lsalzar@fuscoe.com](mailto:lsalzar@fuscoe.com).



**DUDEK** [dudek.com](http://dudek.com) | 800.450.1818 | [hello@dudek.com](mailto:hello@dudek.com)

Congratulations for being selected among

# San Diego's Most Influential Women in Engineering!



Glenna McMahon, PE, CEM



Nicole Peacock, PE, PG

Dudek values your leadership, innovation, and mentorship. We are proud to celebrate with you in your success!

Put our passion to work for you.

**DU** more.



## SAN DIEGO BUSINESS JOURNAL WOMEN OF INFLUENCE IN ENGINEERING 2022



**JUSTINA SANCHEZ**  
Quality Engineer II  
TÜV SÜD America

Justina Sanchez started out as an admin supporting engineers. After two years of learning about the field, she was ready to go back to school to get her engineering degree, which she received in 2010. Shortly after she was promoted to Product Safety Test Technician; another promotion came in 2015. In 2017, she was selected as one of four women globally to be mentored by the CEO for a year. This experience would prove to be valuable for her. Through this mentorship, she developed the Americas Women's Network in hopes of opening opportunities for other women in the company to grow in their careers.

At the onset of COVID-19, Sanchez and a colleague developed the Connect UP Virtual Meet-Ups as a place to bring colleagues back together and boost morale. Sanchez recently accepted a role in Quality and now conducts audits in laboratories throughout North America for TÜV SÜD. She can be reached at (858) 353-5984 or justina.sanchez@tuvsud.com.



**TERESA SCHNEIDER**  
Commissioning Authority  
GMC Commissioning, Inc.

Teresa Schneider is a Commissioning Authority at GMC Commissioning, Inc. Her industry experience includes over three years' in the commercial building design and construction industry, specializing in commissioning, energy modeling and LEED certification.

Schneider has a Bachelor of Science degree in Mechanical Engineering from the Milwaukee School of Engineering along with minors in Math and Chemistry. She is a Registered Professional Engineer in California and Building Enclosure Commissioning Process Provider. Schneider has working experience with a number of industries, including laboratories, offices, mixed-use and hospitality. In addition, she brings natural ventilation, solar PV, and energy modeling experience.

Her largest completed and in-process projects include Camino, Founders and Sacred Heart Halls at the University of San Diego; the Center for Novel Therapeutics; and Britannia Cove at Oyster Point in South San Francisco. Other projects include Alexandria Tech Center and Maker's Quarter Block D, both in San Diego, and Pechanga Resort Casino near Temecula.



**ANISSA STANSFIELD**  
Director of Project & Material Engineering  
General Dynamics NASSCO

Anissa Stansfield brings 20 years of diversified engineering and construction expertise to her role as the Director of Project & Material Engineering at General Dynamics NASSCO. She specializes in resolving complex technical issues that often affect multiple conflicted stakeholders. As such, Stansfield serves a vital role during the concept, contract, functional, detail design and construction of a wide range of ships for the U.S. Navy and private industry. She holds a Bachelor of Science in Naval Architecture and Marine Engineering from Webb Institute, as well as a Master of Science in Strategic Management and an MBA, both from Indiana University's Kelley School of Business.

During the past year, Stansfield supported the successful launch of the U.S. Navy's newest fleet replenishment oiler, USNS John Lewis. She will also lead the development of two new potential government programs. Stansfield enthusiastically serves as a mentor to the next generation of engineers and leaders.



**MELISSA STAYNER**  
Certified Engineering Geologist  
NOVA Services, Inc.

Melissa Stayner is a California Certified Engineering Geologist, and leads the team of engineering geologists at NOVA Services. She specializes in fault rupture hazard and liquefaction hazard investigations, and development of schools, hospitals, life science facilities, high-rise buildings, and large grading jobs for residential developments. She has led NOVA's efforts in providing site specific ground motion hazard analyses now required by the 2019 California Building Code Update.

Stayner manages projects from the investigation through construction. She coordinates with other consultants on the client's technical team to provide value engineering. Her strengths are proactive project management, including providing quick and cost-effective solutions when geotechnical challenges arise. She is extremely passionate about mentoring younger staff, furthering their understanding of the impact a well-executed geotechnical investigation has on a project. She is an active member of San Diego Building Industry Association, and served on the board of CREW San Diego as Director of Marketing. She can be reached at mstayner@usa-nova.com.



# Congratulations

TO ALL THE **WOMEN OF INFLUENCE IN ENGINEERING** AND  
TO OUR VERY OWN CFO, **KRIS TAYLOR!**

WE CELEBRATE AND APPRECIATE THE INSPIRING WOMEN  
THROUGHOUT THIS INDUSTRY AND WITHIN **LATITUDE 33!**



Established in 1993, Latitude 33 is a California Certified Small Business dedicated to serving the San Diego region. Our market diversity ranges from education to residential to military with services including:

**Land Planning  
Civil Engineering  
Land Survey & Mapping  
GIS and Utility Mapping  
Stormwater Management  
Drone Technology**

When selecting Latitude 33, you are guaranteed experienced and reliable professionals who are just as passionate about your project as you are.

**Come experience our  
standard of excellence!**



**latitude33**  
PLANNING & ENGINEERING  
www.latitude33.com



SAN DIEGO BUSINESS JOURNAL

WOMEN OF INFLUENCE IN ENGINEERING 2022



**LORI ANN STEVENS**  
Director, Technical Design  
Turner Construction Company

Lori Ann Stevens brings strong management expertise and field experience to Turner with more than 25 years of developer, design and construction experience. Her dynamic experience in both design and construction assures that design-build projects provide the best value to clients. Stevens currently serves as Director, Technical Design within Turner’s “Turner Engineering Group” (TEG). In her former role as West Coast Regional Design Manager, she assisted Turner’s West Coast offices during the pursuit, design and construction of design-build work, as well as other complex construction projects.

Stevens received her bachelor’s degree in Construction Management from Arizona State University, and her master’s degree in Civil Engineering from San Diego State University. Prior to joining Turner, Stevens served as the Assistant Vice President of Lowe Enterprises. She is affiliated with multiple industry and civic groups and has served as the President of Construction Real Estate Women (CREW). She can be reached at [lstevens@tcco.com](mailto:lstevens@tcco.com).



**SAMANTHA STURTEVANT**  
Senior Project Engineer  
C.W. Driver

Samantha Sturtevant provides management as well as support to field staff and project managers at C.W. Driver. As senior project engineer, she manages documentation and processes of projects, facilitating their trajectory by providing all information necessary for completion. She is an active member of CREW San Diego (Commercial Real Estate Women) and has worked with and been a member of organizations including Urban Land Institute (ULI), American Society of Landscape Architects (ASLA), the Surfrider Foundation, the National Association of Women in Construction (NAWIC) and the Design Build Institute of America (DBIA).

Sturtevant has a LEED AP designation, demonstrating her knowledge about green building and environmentally friendly practices. Her first project with C.W. Driver, the first Net-Zero archives in the state, won a LEED Gold rating. Sturtevant received her Bachelor of Landscape Architecture with a minor in Construction Management and MBA from Cal Poly San Luis Obispo. She can be reached at (619) 696-5100 or [sturtevant@cwdriver.com](mailto:sturtevant@cwdriver.com).



**KRIS TAYLOR**  
Chief Financial Officer and Partner  
Latitude 33 Planning & Engineering

Kris Taylor, Chief Financial Officer for Latitude 33 Planning & Engineering, has overseen her company’s financial and operations functions since 2002. Responsible for her firm’s overall financial strategy and administration, she helps it pursue growth, meet client expectations, and pursue diversity in both project mix and staff skills. Taylor led Latitude 33 to a 70% increase in revenue and 50% increase in staff size last year alone. Latitude 33’s growth has allowed the company to purchase its own building and aggressively seize opportunities not typical for a professional services firm.

As a Partner, she is a major force in the company that is planning and engineering our region’s highest profile projects, such as the \$3.4 billion San Diego International Airport New T1 project and the \$2.5 billion - \$3 billion UC San Diego Hillcrest Medical Campus redevelopment. She earned her bachelor’s degree in Accounting from San Diego State. She can be reached at (619) 977-4578 or [kris.taylor@latitude33.com](mailto:kris.taylor@latitude33.com).



**SUSAN TOUSI**  
Chief Commercial Officer  
Illumina

Susan Tousi is Chief Commercial Officer at Illumina, where she leads global sales, commercial operations, and commercial strategy and enablement. Tousi combines her management leadership skills with deep technical knowledge of Illumina’s product portfolio to ensure the commercial success of the organization. She has been with Illumina since 2012, previously serving as Chief Product Officer. She led the acquisition of Edico Genome, BlueBee and Enancio. Combined with Illumina’s existing software solutions, these new capabilities enable scalable, seamless, end-to-end software solutions that drive the utilization of genomic data and accelerate the adoption of genomic data in clinical care.

Tousi has more than 25 years of R&D and business leadership at Fortune 100 technology companies and within the life sciences industry. She holds an MBA degree from UCLA and an Honors BS in Engineering Science and Mechanics from Pennsylvania State University. In 2018, she was elected to the National Academy of Engineering.



On behalf of the entire team at NOVA Services, congratulations to Gillian and Melissa and all the honorees!



**Gillian Carzzarella, PE**  
Senior Engineer



**Melissa Stayner, PG, CEG**  
Senior Engineering Geologist

We’re so proud of  
NOVA’s  
Women of  
Influence in  
Engineering!

Providing geotechnical engineering, geology, special inspection, materials testing, and non-destructive testing services to San Diego and Orange Counties.

4373 Viewridge Avenue, Suite B  
San Diego, CA 92123  
858.292.7575  
[www.usa-nova.com](http://www.usa-nova.com)



Serving diverse markets including education, healthcare, mixed-use, high-rise, transportation, municipal, affordable housing, military, commercial, and industrial.

944 Calle Amanecer, Suite F  
San Clemente, CA 92673  
949.388.7710



SAN DIEGO BUSINESS JOURNAL  
WOMEN OF INFLUENCE IN ENGINEERING 2022



**MAYKIA VANG**  
Owner and Senior Project Manager  
Civil Sense, Inc.

Maykia Vang entered the civil engineering field more than 24 years ago and has since led the design and planning of some of San Diego's most attractive master-planned residential communities. Starting as a Survey Analyst in 1998, Vang helped map the initial phases of the 2,652-acre, 3,590-unit Pacific Highlands Ranch community east of Del Mar. Vang quickly rose through the ranks and began managing teams preparing maps and plans for residential subdivisions, commercial space and more.

In 2016, Vang started Civil Sense, Inc., which has become a highly respected civil engineering firm known for solving complicated land use problems while surpassing client expectations and meeting difficult timelines. Today she routinely manages all aspects of design, planning and mapping for large-scale national developers, and serves as an extension of the developer managing consultants and overseeing project teams. Her current projects include Tri Pointe Homes' 390-acre Citro community in Fallbrook. She can be reached at (858) 663-8642 or maykia@civil-sense.com



**HOLLEY VELA**  
Project Superintendent  
Turner Construction Company

Holley Vela is a Project Superintendent for Turner. She earned her BS in Structural Engineering from UC San Diego and has been in the construction industry for 15 years. She has worked on a number of notable projects during her career, including her current role as Project Superintendent at the Campus at Horton, a \$220 million project involving the renovation and repositioning of the existing 10-block Horton Plaza Center downtown. Prior to her current project, Vela was Superintendent on the award-winning Navy General Administration Facility, Ballpark Village, Celadon on 9th and Broadway, UC San Diego the Village at Torrey Pines West, and Sempra Energy Corporate Headquarters, among other projects.

Vela is one of two superintendent leads on Turner's Training Committee, developing and leading the internal Superintendent Training program. She serves as a mentor in Turner's Future Leaders Group Mentor program and is active in the Professional Women's Group. She can be reached at hvela@tcco.com.



**SRIVIDHYA VISWANATHAN**  
Vice President, Southwest Director of Engineering  
SCS Engineers

Srividhya (Vidhya) Viswanathan is an SCS Engineers Vice President, Director of Engineering for the firm's Southwest Region and a rising young professional. She leads the firm's solid waste engineering operations in California, Arizona, Nevada, Utah and New Mexico.

A registered civil engineer with years of experience working with large municipalities and private waste management firms, she has experience in permitting, designing and constructing landfills including cell expansion, liner installation, and landfill gas collection and control systems. Her work — focused on helping clients comply with solid waste regulations and finding opportunities to design-build-operate systems that reduce our environmental footprint, recycle our waste, and produce renewable energy — is winning awards and gaining industry recognition.

She spent the last several years at SCS broadening her client base in the Southwest, and expanding her expertise from solid waste and environmental engineering to include renewable energy, recycling and organics management. She can be reached at (800) 326-9544 or SViswanathan@scsengineers.com



SCS ENGINEERS

Congratulations to all the

Women of Influence in Engineering!

WE CELEBRATE OUR AWARDEES:

▶ Srividhya (Vidhya) Viswanathan

▶ Jennifer Morton

▶ Hazardous Waste Due Diligence, Compliance, & Management

▶ Landfill & Landfill Gas Engineering & Compliance Management

▶ Sustainable Materials Management

www.scsengineers.com | (800) 767-4727



SAN DIEGO BUSINESS JOURNAL

WOMEN OF INFLUENCE IN ENGINEERING 2022



SARAH WALKER

Strategic Communications Professional and Graphic Design Artist  
Water Systems Consulting, Inc.

Sarah Walker has 18 years of experience in the engineering industry as a graphic artist, transforming how engineering challenges, opportunities and solutions are communicated. Her focus is on the value of effective communication as it relates to clear branding and messaging for clean water programs, projects, agencies, organizations and initiatives. She is a visual translator for technical minds and transforming complex concepts and data into accessible, understandable information for a variety of project stakeholders and the public. She has provided graphics and visual aids for foundational water planning documents such as the Water Research Foundation’s Blueprint for One Water — a user-friendly document for the practical application of ‘One Water’ planning. Recently, she assisted the San Elijo Joint Powers Authority in developing new branding and customer communications strategies and work products and developing collateral, graphics and signage for the San Elijo Joint Powers Authority’s Water Campus open house for the public.



ALYSEN WEILAND

Principal  
Psomas

Alysen Weiland has 22 years’ experience in civil engineering working on projects from pipeline design to civil site development. She has been a phenomenal asset to Psomas for 17 years and is highly respected for her expertise in stormwater master planning and design, and planning and programming for higher education campuses. Her recent campus projects have helped Psomas earn numerous industry and project awards, including American Society of Civil Engineers (ASCE) Urban and Land Development Project of the Year, and many others. One of the more considerable professional challenges Weiland has faced and overcome is working in a male-dominated industry. This industry imbalance drives her to actively recruit, hire, advocate for and mentor female engineers. Under her leadership, Weiland built an incredible team of 50 percent female engineers. As a mother of twins, she helps mentor the return to work process when a female co-worker returns from maternity leave. She can be reached at [alysen.weiland@psomas.com](mailto:alysen.weiland@psomas.com).



DR. JUNFEI XIE

Assistant Professor of Electrical and Computer Engineering  
San Diego State University

Dr. Junfei Xie, assistant professor of Electrical and Computer Engineering at San Diego State University, is a pioneer in drone computing research and a dedicated educator for promoting STEM education among underrepresented minority students, especially women. Dr. Xie’s research centers around developing innovative strategies to improve the scalability, efficiency, resilience and safety for dynamic engineering systems and networks. Her research outcomes contribute to a wide range of applications including airborne networks, edge computing, air transportation systems, complex information systems and sensor networks. Her recent work on drone computing won the prestigious NSF CAREER Award and opens up a new research direction. As a female educator in engineering, Dr. Xie is dedicated to promoting STEM education and broadening the participation of underrepresented minority students in engineering and computing. She takes part in several initiatives to promote engineering careers among women and girls at the college and the K-12 levels. She can be reached at (619) 594-2068 or [jxie4@sdsu.edu](mailto:jxie4@sdsu.edu).



SAN DIEGO STATE  
UNIVERSITY



Maykia Vang

Owner and Senior Project Manager  
Civil Sense, Inc.



Congratulations!

Tri Pointe Homes congratulates Maykia Vang on her well-deserved selection as a Top 50 Women of Influence in Engineering!

Maykia is an inspirational leader and expert Civil Engineer whose contributions to design and planning can be seen at master-planned communities throughout San Diego County. We thank you for your outstanding service.





ENGINEERING FIRMS

Ranked by number of local full-time licensed engineers as of February 2022

Rank	Company Address Website   Phone		Full-time local engineers 2022 2021 % +(-)	No. of employees San Diego Companywide	Areas of practice	Top local executive(s) Year est. locally	
1 (1)	<b>Wood Environment &amp; Infrastructure Solutions, Inc.</b> 9177 Sky Park Court San Diego, 92123 www.woodplc.com   858-278-3600		98 109 (10)	311 40,000	Engineering, construction materials testing & inspections, geotechnical, environmental & QA services	Pete Campbell 1972	
2 (2)	<b>Kimley-Horn and Associates Inc.</b> 401 B St., Suite 600 San Diego, 92101 www.kimley-horn.com   619-234-9411		56 62 (10)	134 5,389	Land development, highway, transit, municipal & aviation	Dennis Landaal 1989	
3 (4)	<b>Rick Engineering Co.</b> 5620 Friars Road San Diego, 92110 www.rickengineering.com   619-291-0707		55 50 10	152 350	Civil, transportation, traffic, water resources, landscape arch, urban design, planning, surveying	Kai Ramer 1955	
4 (5)	<b>NV5 Inc.</b> 15092 Avenue of Science, Suite 200 San Diego, 92128 www.nv5.com   858-385-0500		52 49 6	322 2,969	Civil engineering, surveying, electrical & gas distribution & transmission, construction management	Carmen Kasner 1949	
5 (8)	<b>Coffman Engineers Inc.</b> 1455 Frazee Road, Suite 600 San Diego, 92108 www.coffman.com   619-559-7264		46 39 18	85 609	Structural, mechanical, CxA, electrical, civil, fire protection/ life safety, energy & sustainability	Scott Twele 2016	
6 (3)	<b>Kleinfelder</b> 770 First Ave., Suite 400 San Diego, 92101 www.kleinfelder.com   619-831-4600		42 47 (11)	174 2,580	Bridge, civil, construction mgmt., environmental, materials testing & inspection, structural	Louis Armstrong 1985	
7 (NR)	<b>Jacobs Engineering Inc.</b> 401 B St., Suite 1560 San Diego, 92101 www.jacobs.com   619-687-0110		41 40 3	130 55,000	Consulting, planning, environmental, engineering, construction management and program management	Hany Haroun 1978	
8 (9)	<b>Michael Baker International Inc.</b> 9755 Clairemont Mesa Blvd. San Diego, 92124 www.mbakerialtl.com   858-614-5000		40 37 8	140 3,500	General civil, water/wastewater, transportation, stormwater, water quality, planning, GIS	Trudi Lim 1969	
9 (7)	<b>Geosyntec Consultants</b> 16644 W. Bernardo Drive, Suite 301 San Diego, 92127 www.geosyntec.com   858-674-6559		40 40 0	118 1,766	geotechnical, water treatment, environmental, hydraulics, and process engineering	Ron Johnson 1998	
10 (10)	<b>KPFF Consulting Engineers</b> 3131 Camino del Rio N., Suite 1080 San Diego, 92108 www.kpff.com   619-521-8500		35 32 9	82 1,300	Structural engineering	Eric Lehmkuhl 1994	
11 (11)	<b>AECOM</b> 401 W. A St., Suite 1200 San Diego, 92101 www.aecom.com   619-610-7600		32 32 0	263 47,000	PM, transportation, env., drainage, stormwater, energy, land planning, water, geotech engineering	Cecilia MeyerLovell Daniel Lee 1990 <sup>(1)</sup>	
12 (20)	<b>Stantec</b> 9797 Aero Drive, Suite 310 San Diego, 92123 www.stantec.com   858-751-1200		31 16 94	82 25,000	Water, power, healthcare, higher ed, civil, electrical, lighting, IT, AV, environmental	Ed Othmer, Jr. 1970	
13 (12)	<b>Pasco Laret Suiter &amp; Associates, Inc.</b> 1911 San Diego Ave., Suite 100 San Diego, 92110 www.plsaengineering.com   858-259-8212		25 25 0	45 50	Land dev. consulting, planning, eng. & land surveying for residential, commercial, mixed-use	Justin Suiter Greg Lang 1985	
14 (NR)	<b>Dudek</b> 605 Third St. Encinitas, 92024 www.dudek.com   760-942-5147		24 wnd wnd	238 705	Environmental	Joe Monaco 1980	
15 (13)	<b>Hunsaker and Associates San Diego Inc.</b> 9707 Waples Street San Diego, 92121 www.hunsakersd.com   858-558-4500		24 24 0	67 67	Land planning, civil engr., survey, due diligence, project mgmt., cost estimating, water resources	Alisa Vialpando 1987	
16 (15)	<b>Brown and Caldwell</b> 451 A St., Suite 1500 San Diego, 92101 www.browncaldwell.com   858-514-8822		22 21 5	45 1,700	Water/Wastewater Treatment, Water Reuse, Remediation/ Waste Mgmt, Renewable Energy, Infrastructure	J.P. Semper 1987	
17 (14)	<b>Nasland Engineering</b> 4740 Ruffner St. San Diego, 92111 www.nasland.com   858-292-7770		21 23 (9)	40 43	Civil engineering, surveying, land planning	Steven Nasland 1959	
18 (17)	<b>BWE Inc.</b> 9449 Balboa Ave., Suite 270 San Diego, 92123 www.bwesd.com   619-299-5550		18 19 (5)	53 19	Structural & civil engineering, land surveying & planning, expert witness	Charlie Colvin 1971	

(NR) Not Ranked

Source: The firms.

Due to rounding off, some percentages may appear incorrect.

In case of a tie, companies are ranked by the number of local full-time licensed engineers in 2021.

To the best of our knowledge, this information is accurate as of press time. While every effort is made to ensure the accuracy and thoroughness of

the list, omissions and typographical errors sometimes occur. Please send corrections or additions to the Research Department at the San Diego Business Journal, Elaine Keisling, sdbjlists@sdbj.com. This list may not be reprinted in whole or in part without prior written permission from the editor. Some companies have declined to participate or did not return a survey by press time. It is not the intent of this list to endorse the participants or to imply a firm's size or numerical rank indicates its quality.

<sup>(1)</sup> AECOM was founded in 1990, with acquired firms in the San Diego area dating back to 1956.



ENGINEERING FIRMS							
Ranked by number of local full-time licensed engineers as of February 2022							
Rank	Company Address Website   Phone		Full-time local engineers 2022 2021 % +(-)	No. of employees San Diego Companywide	Areas of practice	Top local executive(s) Year est. locally	
19 (18)	<b>Latitude 33 Planning and Engineering</b> 9968 Hibert St., Second Floor San Diego, 92131 www.latitude33.com   858-751-0633		18 17 6	51 60	Civil, planning, survey, life science, military, K-12, higher ed, civic, mixed-use, residential	Matthew Semic 1993	
20 (21)	<b>Project Design Consultants</b> 701 B St., Suite 800 San Diego, 92101 www.projectdesign.com   619-235-6471		17 16 6	62 62	Civil engineering, survey, planning, landscape architecture	Greg Shields 1976	
21 (23)	<b>Geocon Inc.</b> 6960 Flanders Drive San Diego, 92121 www.geoconinc.com   858-558-6900		16 16 0	105 287	Geotechnical Engineering, Engineering Geology, Environmental Services, Materials Testing/Inspection	Joe Vettel 1971	
22 (22)	<b>HNTB Corp.</b> 401 B St., Suite 301 San Diego, 92101 www.hntb.com   619-684-6586		16 16 0	30 4,968	Architecture, civil eng., transportation, urban planning, structural eng., envir, construction mgt.	Mark Weber 1914	
23 (24)	<b>Atlas Technical Consultants</b> 6280 Riverdale Street San Diego, 92120 www.oneatlas.com   619-280-4321		15 15 0	150 3,236	Geotechnical, Environmental, Special Inspection, Materials Testing, Construction Technology, Geophys	Mehrnoush Yavary Ron Baudour 1959	
24 (19)	<b>Dokken Engineering</b> 1450 Frazee Road, Suite 100 San Diego, 92108 www.dokkenengineering.com   858-514-8377		15 17 (12)	37 133	Transportation engineering solutions for public agencies: highway/roadway & bridge/structure design	Mark Tarrall 1994	
25 (25)	<b>tk1sc</b> 4755 Eastgate Mall, Suite 150 San Diego, 92121 www.tk1sc.com   858-362-6800		13 13 0	50 250	MEP, Fire Protection, Low-Voltage, Energy + Sustainability, Lighting, Commissioning	Joe Ross 2015	
26 (30)	<b>Ardurra Group Inc.</b> 14271 Danielson Street Poway, 92064 www.ardurra.com   (858) 413-2400		13 10 30	41 902	Civil engineering, construction management, environmental, planning & info services, flow monitoring	Rob Weber Preston Lewis 2002	
27 (26)	<b>Degenkolb Engineers</b> 225 Broadway, Suite 1325 San Diego, 92101 www.degenkolb.com   619-515-0299		13 11 18	15 220	Structural engineering, seismic evaluation/retrofit, construction engineering, historic	Michael Braund 2000	
28 (33)	<b>C&amp;S Companies</b> 2355 Northside Drive, Suite 350 San Diego, 92108 www.cscos.com   619-296-9373		12 9 33	73 522	Civil, electrical, and structural engineering, construction management and design + build	Cory Hazlewood 1999	
29 (34)	<b>Burns &amp; McDonnell</b> 4225 Executive Square, Suite 500 San Diego, 92037 www.burnsmcd.com/sandiego   858-320-2920		12 9 33	41 8,500	Transmission, distribution, environmental studies, permitting, renewable energy	Justin Sherman Rashmi Menon 1995	
30 (46)	<b>SCS Engineers</b> 8799 Balboa Ave., Suite 290 San Diego, 92123 www.scsengineers.com   858-571-5500		11 3 267	65 1,036	Solid/hazardous waste mgt.; landfill gas; remediation; renewable energy;air, water, soil compliance	Daniel Johnson 1992	
31 (28)	<b>Randall Lamb Associates</b> 3131 Camino del Rio North, Suite 800 San Diego, 92108 www.randalllamb.com   619-713-5763		11 10 10	33 54	MEP engineering, sustainable design	Gary Eastley 1974	
32 (27)	<b>West Coast Civil Inc.</b> 9740 Appaloosa Road, Suite 200 San Diego, 92131 www.westcoastcivil.com   858-869-1332		11 10 10	24 29	Civil engineering, water/wastewater, storm water, land planning and construction management	Anthony Gonzalez 2013	
33 (36)	<b>EXP</b> 5670 Oberlin Drive San Diego, 92121 www.exp.com   858-597-0555		10 8 25	48 3,700	Mechanical, electrical, plumbing, fire protection, sustainability, tech design, lighting design	Rachael Sampson 1986	
34 (NR)	<b>DEC Engineers Inc.</b> 10150 Meanley Drive San Diego, 92131 www.decengineers.com   858-578-3270		10 wnd wnd	38 38	Mechanical, Plumbing & CXA Services for Life Science, Military, Schools and Commercial Buildings.	Chris Deck Paul Hausbeck 2000	
35 (39)	<b>DCI Engineers</b> 101 W. Broadway, Suite 1260 San Diego, 92101 www.dci-engineers.com   619-234-0501		10 6 67	14 326	Structural engineering design for mixed-use, multifamily, higher education, science and technology	Ryan Slaybaugh 2001	
36 (29)	<b>Ninyo &amp; Moore Geotechnical &amp; Environmental Sciences Consultants</b> 5710 Ruffin Road San Diego, 92123 www.ninyoandmoore.com   858-576-1000		9 10 (10)	95 531	Geotechnical engineering, materials testing, special inspection, environmental consulting	Avram Ninyo 1986	

(NR) Not Ranked

Source: The firms.

Due to rounding off, some percentages may appear incorrect.

In case of a tie, companies are ranked by the number of local full-time licensed engineers in 2021.



To the best of our knowledge, this information is accurate as of press time. While every effort is made to ensure the accuracy and thoroughness of

the list, omissions and typographical errors sometimes occur. Please send corrections or additions to the Research Department at the San Diego Business Journal, [Alaine.Keisling@sdbjlists@sdbj.com](mailto:Alaine.Keisling@sdbjlists@sdbj.com). This list may not be reprinted in whole or in part without prior written permission from the editor. Some companies have declined to participate or did not return a survey by press time. It is not the intent of this list to endorse the participants or to imply a firm's size or numerical rank indicates its quality.



# ENGINEERING FIRMS

Ranked by number of local full-time licensed engineers as of February 2022

Rank	Company Address Website   Phone		Full-time local engineers 2022 2021 % +(-)	No. of employees San Diego Companywide	Areas of practice	Top local executive(s) Year est. locally	
37 (31)	<b>Salas O'Brien</b> 3220 Executive Ridge, Suite 210 Vista, 92081 www.salasobrien.com   760-560-0100		9 9 0	35 1,300	Mechanical, electrical, plumbing engineering, building commissioning, LEED consulting	Farzad Tadayon 1992	
38 (32)	<b>IMEG Corp.</b> 10920 Via Fontera, Suite 200 San Diego, 92127 www.imegcorp.com   858-368-3400		9 9 0	12 1,725	Healthcare, education, municipal, mixed-use, aviation	David Rosenberger 1987	
39 (52)	<b>NOVA Services, Inc.</b> 4373 Viewridge Avenue, Suite B San Diego, 92123 www.usa-nova.com   858-292-7575		8 2 300	66 74	Geotechnical Engineering, Earthwork Observation/ Testing, Special Inspection, Materials Testing, NDT	Danny Barnett 2008	
40 (37)	<b>APTIM</b> 1230 Columbia St., Suite 620 San Diego, 92101 www.aptim.com   619-239-1690		8 8 0	62 5,000	Resiliency, engineering, environmental remediation/ superfund cleanup, hazardous waste management	Ulrika Messer 1987	
41 (NR)	<b>SMR-ISD Consulting Structural Engineers, Inc.</b> 1495 Pacific Highway, Suite 400 San Diego, 92101 www.smr-eng.com   619-294-6600		8 9 (11)	12 12	Structural engineering, design-build, plan review, forensic engineering	Mehdi Rashti 1987	
42 (38)	<b>H+W Engineering</b> 1810 Gillespie Way, Suite 207 El Cajon, 92020 www.hwengr.com   619-659-8234		7 6 17	41 41	Mechanical, Electrical & Plumbing Engineering, Lighting Design, BIM Modeling	Bryan Wayne 2010	
43 (NR)	<b>Fusco Engineering Inc.</b> 6390 Greenwich Drive, Suite 170 San Diego, 92122 www.fusco.com   858-554-1500		7 wnd wnd	23 178	Civil eng., stormwater mgmt., survey/mapping, sustainable site design, GIS, 3-D visualization	Eric Armstrong 1990	
44 (NR)	<b>Glumac</b> 225 Broadway, Suite 1425 San Diego, 92101 www.glumac.com   619-577-4616		7 4 75	22 315	MEP engineering, sustainable design, carbon consulting, energy modeling & building commissioning	Nicki Sparks 2013	
45 (35)	<b>Reid Middleton Inc.</b> 13220 Evening Creek Drive S., Suite 112 San Diego, 92128 www.reidmiddleton.com   858-668-0707		6 8 (25)	8 181	Federal/Military, Civil Engineering, Structural Engineering, Surveying, Planning, Higher Education	Darin Aveyard 2014	
46 (41)	<b>WEST Consultants Inc.</b> 11440 W. Bernardo Court, Suite 360 San Diego, 92127 www.westconsultants.com   858-487-9378		5 4 25	10 68	Water resources engineering, hydraulics, hydrology, sediment, scour, modeling, reservoir, floods	Martin Teal 1988	
47 (44)	<b>Snipes-Dye Associates</b> 8348 Center Drive, Suite G La Mesa, 91942 www.snipesdye.com   619-697-9234		4 4 0	21 21	Public, private sector, land dev., schools, design, land surveying & construction staking	William Snipes Matthew Kurtz 1974	
48 (40)	<b>BSE Engineering Inc.</b> 9903 Businesspark Ave, Suite 104 San Diego, 92131 www.BSEengineering.com   858-800-6000		4 6 (33)	13 19	Mechanical, electrical, plumbing & energy, eng. services, sustainable eng.	Alan Brown 1967	
49 (45)	<b>GMC Commissioning Inc.</b> 9985 Businesspark Ave., Suite A San Diego, 92131 www.GMCCx.com   858-605-1190		4 4 0	13 14	Commissioning, Qualification, Lab Svcs, MEP, Controls, Mission Critical, Quality Assurance, Energy	Alex Mathers 2017	
50 (48)	<b>Junker Engineering Group</b> 8285 La Mesa Blvd. Sute C La Mesa, 91942 www.junkereng.com   619-606-5058		4 3 33	5 5	Structural, earthquake engineering; certification & testing; unique structures	Dan Junker 2019	
51 (43)	<b>Syska Hennessy Group</b> 401 W. A St., Suite 1850 San Diego, 92101 www.syska.com   858-244-0360		3 4 (25)	12 484	MEP, critical systems, commissioning, facilities mgmt., sustainability engineering	Sean Marcel 1997	
52 (47)	<b>San Dieguito Engineering Inc.</b> 1911 Palomar Oaks Way, Suite 200 Carlsbad, 92008 www.sdeinc.com   858-345-1149		3 3 0	12 12	civil engineering, land planning and surveying, survey mapping, SUE, stormwater management.	Annie Aguilar 1974	
53 (NR)	<b>Pro Engineering Consulting</b> 1057 Sycamore Ave. Vista, 92081 www.proengc.com   858-240-4336		2 2 0	16 18	Mechanical, electrical and plumbing engineering; HVAC design; Title-24; solar	Ramin Parsi 2007	
54 (53)	<b>Alpers Engineering Group, LLC</b> 1111 Sixth Ave., Suite 310 San Diego, 92101 www.alpersengineering.com   858-888-0438		2 2 0	8 8	Building commissioning, energy audits, building automation design, LEED Cx, CHPs Cx	Nicholas Alpers 2014	
55 (NR)	<b>Ware Malcomb</b> 3911 Sorrento Valley Blvd., Suite 120 San Diego, 92121 www.waremalcomb.com   858-638-7277		1 wnd wnd	50 805	civil engineering, architecture, interiors, planning, branding, and building measurement	Brian Koshley 1984	

(NR) Not Ranked

Source: The firms.

Due to rounding off, some percentages may appear incorrect.

In case of a tie, companies are ranked by the number of local full-time licensed engineers in 2021.

the list, omissions and typographical errors sometimes occur. Please send corrections or additions to the Research Department at the San Diego Business Journal, Elaine Keisling, sdbjlists@sdbj.com. This list may not be reprinted in whole or in part without prior written permission from the editor. Some companies have declined to participate or did not return a survey by press time. It is not the intent of this list to endorse the participants or to imply a firm's size or numerical rank indicates its quality.





**SAN DIEGUITO ENGINEERING, INC.**  
Engineering | Surveying | Planning



**Founded in 1974 with over 100 years of collective senior engineering/surveying/planning experience throughout San Diego County**

- Award winning women-owned certified firm
- Turn-key land development and public infrastructure engineering firm
- Urban Planning Development services
- Core Values: Integrity, Commitment, Teamwork, Creativity, and Work-Life Balance

See [WWW.SDEINC.COM](http://WWW.SDEINC.COM) for more information or call (858) 345-1149



**Your Design-Build Experts**

**Everywhere you want to build.**

For over 35 years, **SMR** has been providing structural design services for a wide range of clients and projects, specializing in the Design-Build delivery method leading to a unified flow of work from initial concept through completion...saving time and money, and encouraging innovation and collaboration.

**SMR** is an award-winning, multi-disciplined service-oriented firm with licensed professionals offering structural design, constructability and code reviews, DSA plan reviews, seismic peer reviews and forensic engineering.

**WE'RE**



**HIRING**

STRUCTURAL ENGINEERS | FORENSIC EXPERTS | PLAN REVIEWERS

[www.smr-eng.com](http://www.smr-eng.com) | [karen@smr-eng.com](mailto:karen@smr-eng.com) | 619.294.6600

# H+W ENGINEERING



**H+W Engineering is honored to be on the list of top engineering firms in San Diego. We owe our success to having some of the best and brightest people in the area on our team.**

H+W is a full-service mechanical, electrical, and plumbing (MEP) engineering firm led by two San Diego State Alumni, **Tom Harmon P.E.** and **Bryan Wayne P.E.**, with a total over forty team members.

San Diego based, locally owned, and operated small business. SB, SB-PW, SBLE & ELBE Certified

MEP Engineering | Lighting | Technology | Energy Modeling | BIM Modeling  
specializing in

Office | Industrial | Science & Technology | Mission Critical | Central Plants | Health & Wellness  
Housing & Mixed Use | Hospitality & Retail | Education

[www.hwengr.com](http://www.hwengr.com) | [info@hwengr.com](mailto:info@hwengr.com) | 619-659-8234